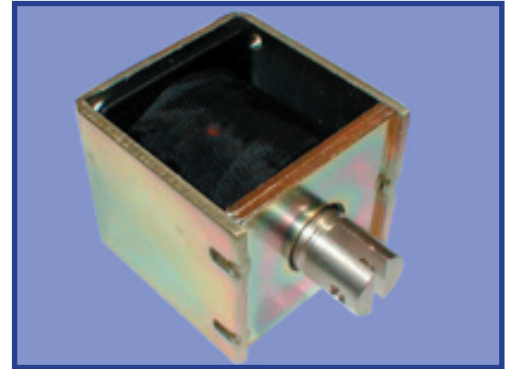


# Solenoids

## Series 43 high force/stroke ratio solenoid



### GENERAL DESCRIPTION

Heavy Duty

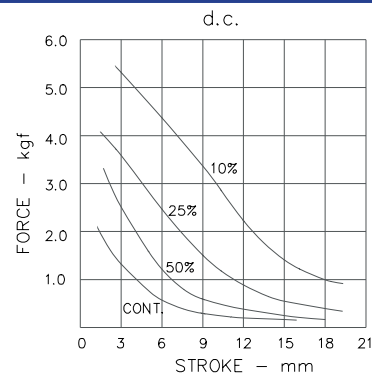
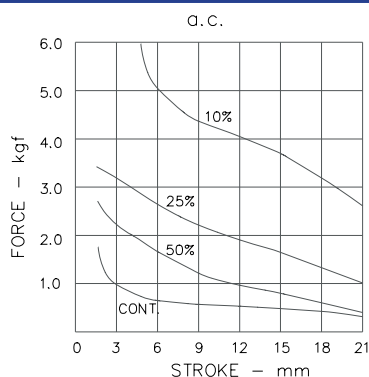
Pull & thrust versions

Shading ring for quiet AC operation

### PERFORMANCE

	Item	Specification
ELECTRICAL	Maximum Ontime	See table below
	Closed power (continuous rating)	AC: 20VA DC: 12W
	Maximum permissible voltage	240V
	Insulation	All coils tested to frame at 1500V RMS 50Hz
MECHANICAL	Weight	425g Plunger: 49g
	Ambient temperature Force/Stroke curve	The information given on this page is based on room temperature of 20 C allowing for a nominal 75 C temperature rise in coil. These force curves show average performance only. In addition to normal manufacturing tolerances, deviations can be expected at some voltages due to the coil winding tolerances.

### FORCE/STROKE CURVES & ON TIME

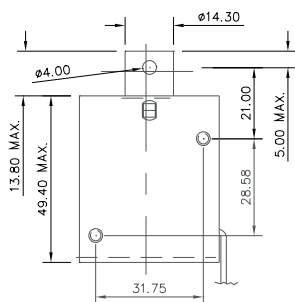


### MAXIMUM ON TIME

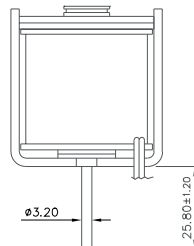
	10%		25%		50%	
	1 cycle	Cont. cycle	1 cycle	Cont cycling	1 cycle	Cont. cycling
AC	65 sec	5 sec	7.75 min	1.25 min	14.5 min	2 min
DC	55 sec	35 sec	3.5 min	2 min	7 min	4.25 min

## DIMENSIONS (mm)

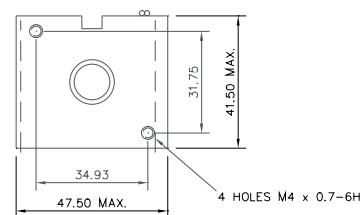
PULL TYPE - SHOWN ENERGISED



PUSH TYPE - SHOWN ENERGISED



LEADS 203 LONG



## CODING

4		3		1			2		0		X			X		X		X			X		X	
AC											1													
DC											6													
Pull													1											
Push													2											
STANDARD													0											
With Push Off Spring													1											



Dialight BLP products are designed, manufactured and tested to ISO 9001 quality standards.  
Dialight BLP Reserve the right to change without prior notice the information contained in this leaflet.

**Dialight BLP Ltd., Exning Rd, Newmarket, Suffolk CB8 0AX, England**

Tel: +44 (0)1638 665161 Fax: +44 (0)1638 660718 Email: [sales@blpcomp.com](mailto:sales@blpcomp.com) Website: <http://www.blpcomp.com>