

MODELS AVAILABLE

| Model Number | Output | Adjustment Voltage | Output Range | Range Current |
|--------------|--------|--------------------|--------------|---------------|
| G06-40A | 6V | 4 – 6V | 40A | G240 |
| G06-60A | 6V | 4 – 6V | 60A | G360 |
| G12-30A | 12V | 8 – 12 6V | 30A | G360 |
| G15-24A | 15V | 10 – 15 7.5V | 24A | G360 |
| G24-10A | 24V | 16 – 25 2V | 10A | G240 |
| G24-15A | 24V | 16 – 25 2V | 15A | G360 |
| G30-08A | 30V | 20 – 31 5V | 8A | G240 |
| G30-12A | 30V | 20 – 31 5V | 12A | G360 |
| G48-05A | 48V | 32 – 50 4V | 5A | G240 |
| G48-75A | 48V | 32 – 50 4V | 7.5A | G360 |

INPUT SPECIFICATION

| | |
|----------------------|--|
| Input Voltage | 92 – 132V a.c. on 115V tap 176 – 264V a.c. on 230V tap |
| Frequency | 45 – 440Hz |
| Supply Type | Single phase TN-S systems (as defined in IEC364) i.e. systems with a separate earth conductor which is directly connected to the neutral conductor at the source |
| Efficiency | Minimum 70% when loaded to maximum rated output power |

OUTPUT SPECIFICATION

| | |
|----------------|--|
| Voltage | Nominal output voltages and adjustment ranges are shown in the table of models above |
|----------------|--|

Current

Recommended maximum continuous operating current ratings (I_{MAX}) are shown in the table of models above. All maximum current ratings are applicable up to 55°C. From 55°C to 70°C derate current linearly from I_{MAX} at 55°C to 50% I_{MAX} at 70°C. All units require free air convection cooling. See outline drawing and mechanical specification for ventilation requirements.

Combined Regulation

An input variation of from 198V to 264V or from 103V to 132V and an output load variation of from 0 to 100% I_{MAX} causes a maximum output voltage variation of 0.1% of nominal.

Ripple and Noise

With the output loaded to I_{MAX} the differential noise voltage over the frequency range 10Hz – 30MHz does not exceed 50mV pk-pk, 10mV r.m.s. on outputs up to 24V, 75mV pk-pk on outputs from 30V upwards.

PROTECTION

| | |
|---------------------------|--|
| Hold Up | All units have sufficient energy storage to ride through a missing mains cycle when supplying full rated output power. At low mains input, 198V or 103V and output at 6V or at nominal +5%, hold up >28ms. |
| Output Overvoltage | The output is protected against overvoltage. Unit shutdown will occur at approximately 120% of nominal. |
| Output Overcurrent | All units are protected against output overload. |

AUXILIARY FUNCTIONS

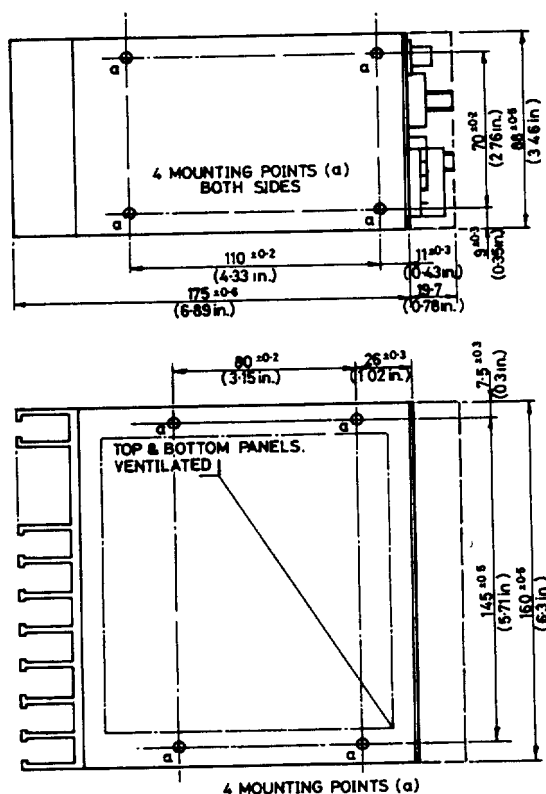
| | |
|-------------------------------------|---|
| Remote Sense | Available on all units. |
| Parallel Operation | All units shown are suitable for operation in parallel with other units of the same model number. |
| Series Operation | Units may be connected in series to provide higher output voltages. |
| External Voltage Programming | The output voltage of all units is programmable by an external resistor. |
| External Inhibit | The output current of all units may be inhibited by a relay contact. |
| Indicators | A LED output present indicator is provided. |

ISOLATION

| | |
|-----------------------------|---|
| Primary to Secondary | Complete units are tested to 1.5kV a.c. r.m.s. between input and output, with all output terminals connected together and connected to earth. |
| Secondary to Earth | Units are tested to 500V d.c. from output to earth, with all output terminals connected together. |

G240 RANGE OUTLINE DRAWING

All dimensions are nominal and are given in mm (inches).



ELECTROMAGNETIC COMPATIBILITY

| | |
|-----------------------|---|
| Exported Noise | All units meet the requirements of BS800, VDE0875 Curve N, CISPR (Publication 2) Curve N. |
|-----------------------|---|

MECHANICAL SPECIFICATION

| | |
|--------------------------------|---|
| Mechanical Format | All units are supplied fully enclosed as standard. |
| Mounting Orientation | Units may be mounted in the orientation shown on the front elevation on the outline drawing or inverted. |
| Ventilation and Cooling | The top and bottom faces of the units are ventilated and require free airflow. The heatsink area at the rear of the unit also requires free air flow. |

ENVIRONMENTAL CONDITIONS

| | |
|------------------------------|---|
| Operating Temperature | -10 to 70°C. See current ratings in output specifications for any deratings required. |
| Operating Humidity | 0 to 95% R.H. non-condensing. |

INTERNATIONAL SAFETY STANDARDS

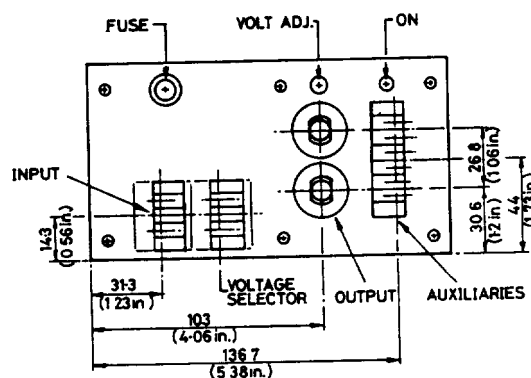
The following units have been tested by BABT and have been approved as being compliant with BS6301.

G06-60A, G24-15A, G30-08A, G30-12A, G48-05A, G48-7 5A

More detailed information is available on these units from your local sales office or agent. Please refer to Section L at the end of your catalogue for your local contact.

ORDERING INFORMATION

The order code simply requires the model number to be prefixed by the source code '13'.

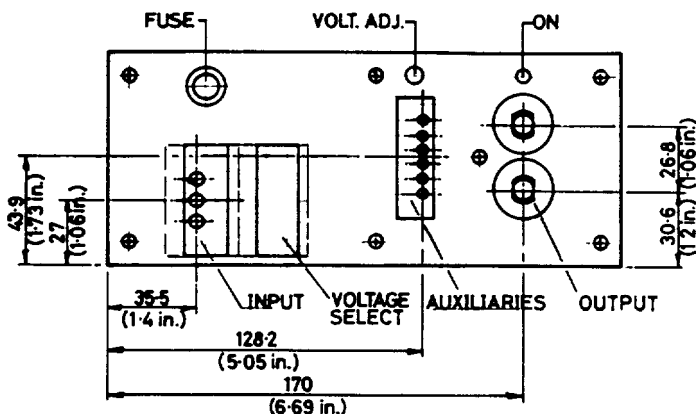
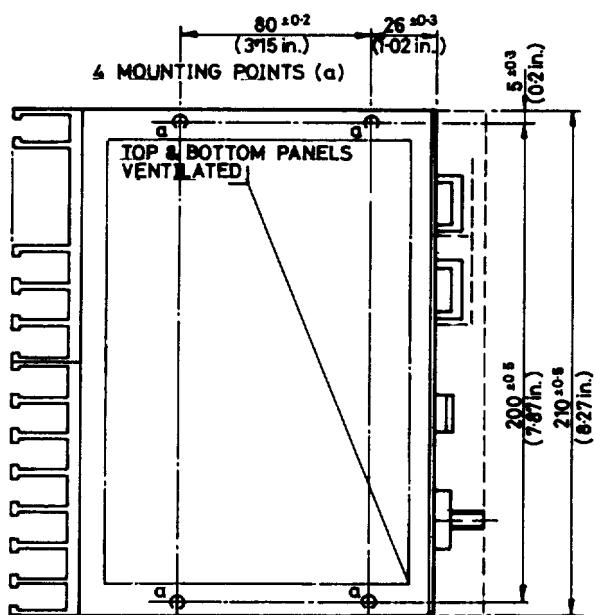
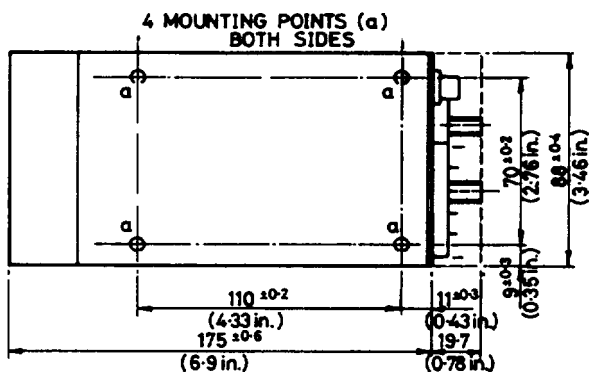


External Dimensions and Mass

| | |
|------------------------|--|
| | 175 ± 19.7 (6.89 ± 0.78) x 160 (6.30) x 88 (3.46) |
| | 3.0 kg (6.6 lb) |
| Fixings | 8 x M3 ISO standard threaded inserts are provided and are marked 'a' on the outline drawing. |
| Connectors | The following connectors are provided on the power supply: |
| Input | 3 x 6BA terminal screws |
| Output | 2 x M8 ISO standard studs on G0640A |
| | 2 x M5 ISO standard studs on other models |
| Input Voltage Selector | 3 x 6BA terminal screws |
| Auxiliary Functions | 6 x 6BA terminal screws |

G360 RANGE OUTLINE DRAWING

All dimensions are nominal and are given in mm (inches)



External Dimensions and Mass

175 + 19.7(6.89 + 0.78) x 210(8.27) x 88(3.46)
3.75kg (8.3lb)

Fixings

8 x M3 ISO standard threaded inserts are provided and are marked 'a' on the outline drawing

Connectors

The following connectors are provided on the power supply

- Input 3 x 4BA terminal screws
- Output 2 x M8 ISO standard studs
- Input Voltage Selector 3 x 4BA terminal screws
- Auxiliary Functions 6 x 6BA terminal screws