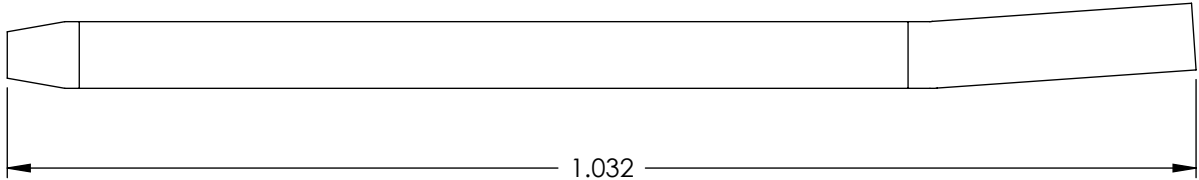
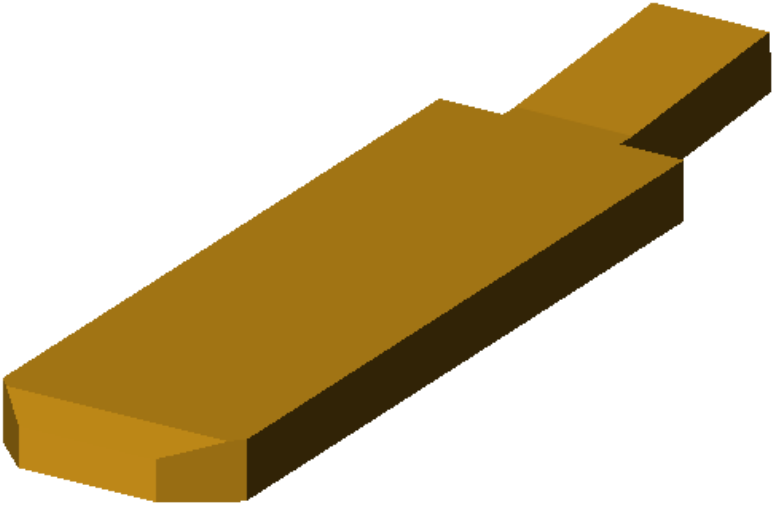
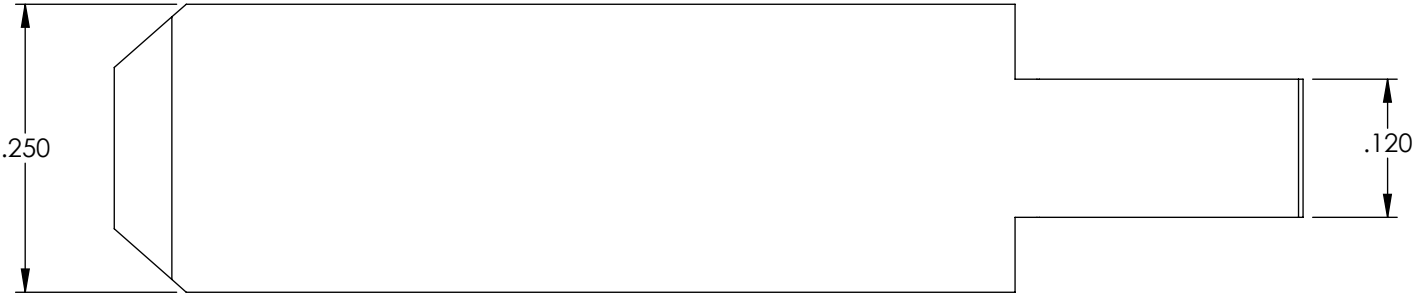


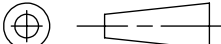

PART CODE	DESCRIPTION	MATERIAL
09895	P1-HB	NOTE 1

Rev.	Description of Change/ SCN#	Date
1	TRANSFER FROM CP TO EP	9-14-04



- NOTES:
1. MATERIAL: .058 THICK C26000 BRASS, 1/2 HARD, ANNEALED TO TEMPER, PER ETCO METAL CODE 01008
 2. PARTS MAY BE COATED WITH A LIGHT FILM OF LUBRICATION USED IN THE MANUFACTURING PROCESS.
 3. ALL CORNERS SHOWN SHARP MAY HAVE A .010 RADIUS MAXIMUM.

UNCONTROLLED COPY

<div></div> <div>THIRD ANGLE PROJECTION</div> <div>TOLERANCES UNLESS OTHERWISE SPECIFIED</div> <div>INCHES: .XX - ±.030 .XXX - ±.015</div> <div>ANGLES - ±5°</div>	TOOL NO. 0814	Title: BLADE			
	<div></div>	DO NOT SCALE DWG.	Drawn By: S.JOHNSON		Date: 9-14-04
		ETCO Incorporated Engineered Products 25 Bellows Street Warwick, R.I. 02888 Phone: (401)467-2400 FAX: (401)467-9230 www.ETCO.com	Chk'd/App'd By:	Scale: 6X	Size B
		Dwg. No.: P1			