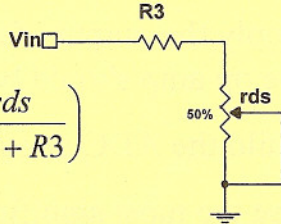


Common
Tie Point
Ground



A ground symbol consisting of a downward-pointing triangle with a horizontal line at its base.

$$A_v = \left(\frac{R_2}{R_1} + 1 \right) \left(\frac{r_{ds}}{r_{ds} + R_3} \right)$$



Your battery will provide VCC and VEE. Ground is merely a common tie point. You will insert a sine wave from a signal generator. The signal generator's ground **MUST** be connected to your common tie point ground.