

| Chip Material | Emitted Color | Lens Color | Viewing Angle |
|---------------|---------------|-------------|---------------|
| AlGaInP | Super Yellow | Water Clear | 30° |

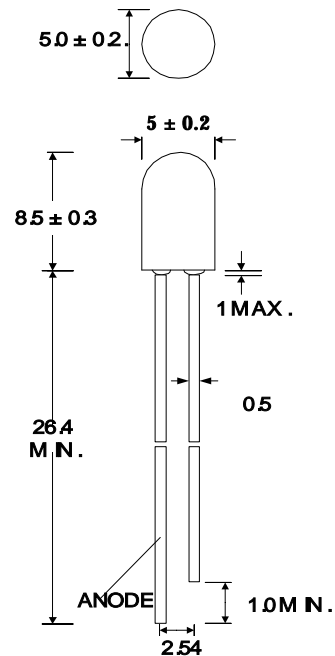
* Package Dimensions:

DESCRIPTION

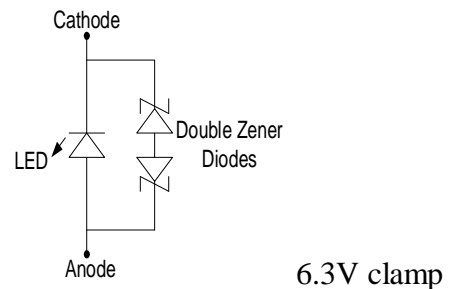
- | Super bright LED Lamp
- | Round type
- | T1-3/4 (5mm) diameter
- | Lens color: Water Clear
- | Without Flange
- | Solder leads without stand-off
- | High Electrostatic Discharge
- | With Zener Diode
- | Compliant with RoHS

FEATURES

- | Emitted color: Super Deep Yellow
- | High Luminous intensity
- | Technology: AlGaInP
- | Peak wavelength $\lambda_p = 595\text{nm}$
- | Viewing angle: 30 deg
- | ESD protection to 8KV



PROTECTION CIRCUIT



Notes:

1. All dimensions are in millimeter.
2. Lead spacing is measured where the lead emerge from the package.



Absolute Maximum Ratings (Ta=25 °C)

| Parameter | Symbol | Max. Rating | Unit |
|---|------------------|-------------|------|
| Power Dissipation | P _D | 120 | mW |
| Peak Forward Current (1/10 Duty Cycle @1KHz) | I _{FP} | 100 | mA |
| Continuous Forward Current | I _F | 50 | mA |
| Reverse Voltage | V _R | 5.0 | V |
| Operating Temperature Range | T _{OPR} | -40~+85 | |
| Storage Temperature Range | T _{STG} | -40~+85 | |
| Maximum Solder time. 1.6 mm from body at 260 °C = 500°F | | 3 | sec. |

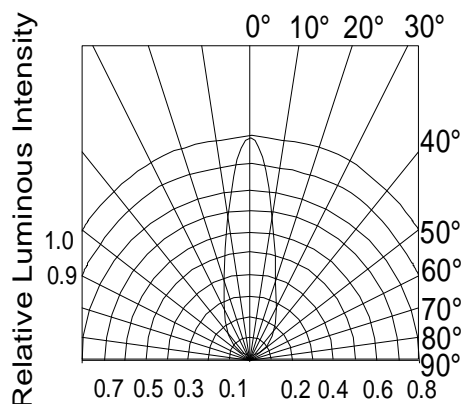
Optical-Electrical Characteristics (Ta=25 °C)

| Parameter | Symbol | Test Condition | Min | Typ | Max | Unit |
|------------------------------|----------------|-----------------------|-------|-------|-------|------|
| Luminous Intensity | I _V | I _F = 20mA | 10000 | 11000 | 11500 | mcd |
| Forward Voltage | V _F | I _F = 20mA | | 2.0 | 2.4 | V |
| Reverse Current | I _R | V _R = 5V | | | 10 | uA |
| Viewing Angle* | 2 1/2 | I _F = 20mA | | 30 | | deg. |
| Peak Wavelength | λ _P | I _F = 20mA | | 595 | | nm |
| Dominant Wavelength | λ _D | I _F = 20mA | | 592 | | nm |
| Spectrum Radiation Bandwidth | | I _F = 20mA | | 20 | | nm |
| Electrostatic Discharge | ESD | Finger model | 8000 | | | V |

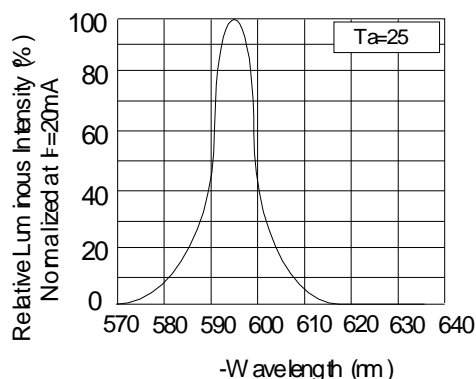
*Tolerance of Viewing Angle: -10 / +5 deg.



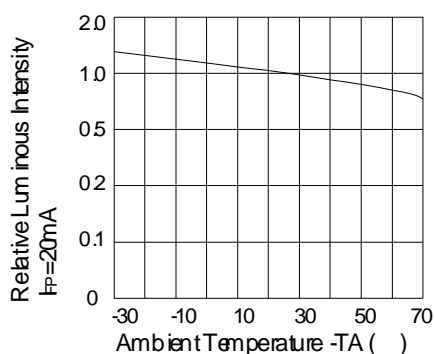
Typical Optical-Electrical (OE) Characteristic Curves



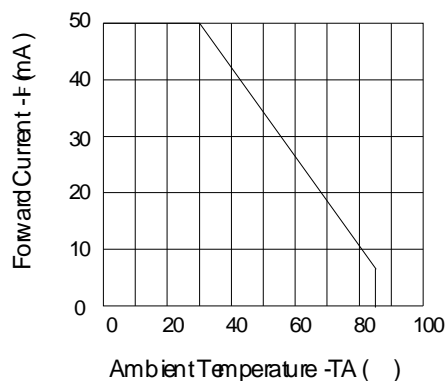
Radiation Diagram



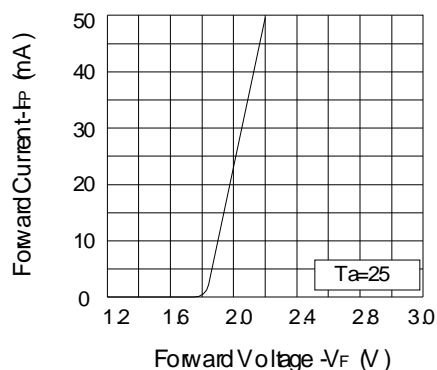
Relative Luminous Intensity vs. Wavelength



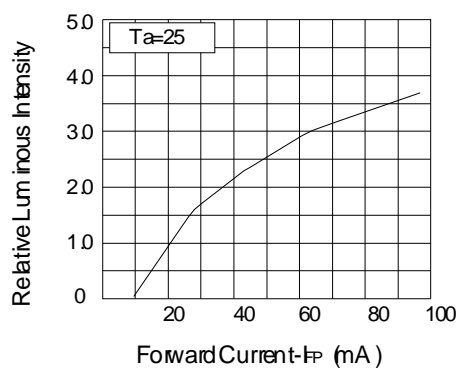
Luminous Intensity vs. Ambient Temperature



Max Forward Current vs. Ambient Temperature



Forward Current vs. Forward Voltage



Luminous Intensity vs. Forward Current