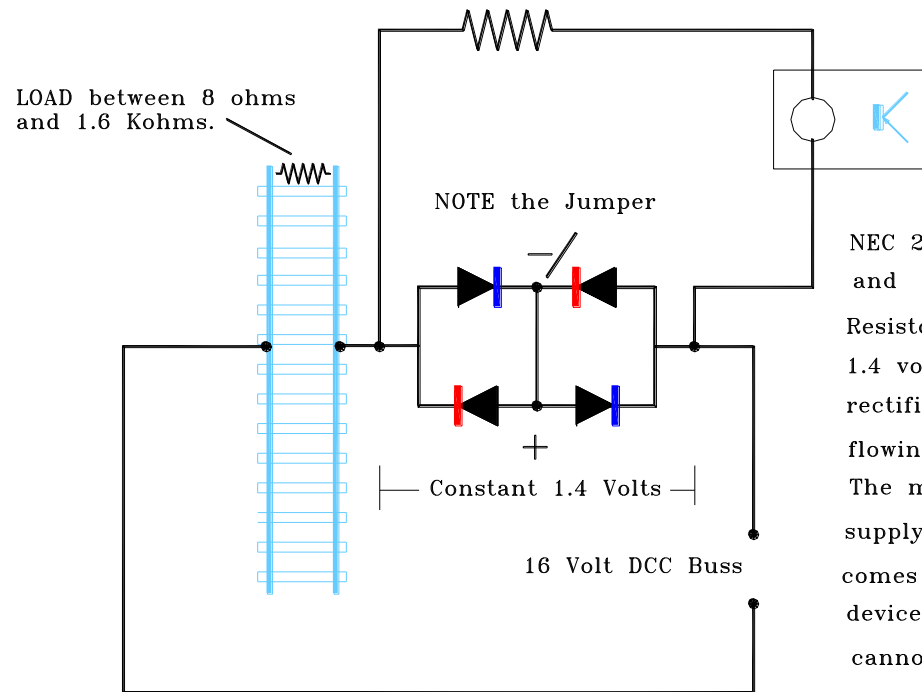
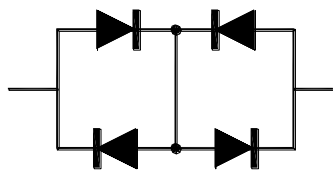


33 Ohms

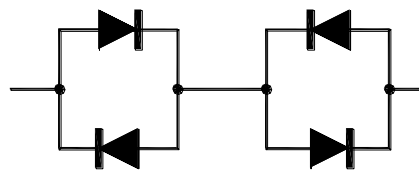


NEC 2506 Data states that op current is 10Ma. and Max AC voltage is 1.4 volts. The 33 Ohm Resistor drops the voltage to about 1.17 (Typical). 1.4 volts is developed across the 2 or 4 Amp bridge rectifier. This voltage is independent of the current flowing through it.

The max resistance across the track must be able to supply at least 10 Ma to the isolator. At 16 volts AC that comes to 1.6 Kohms. A higher value may not trigger the device. The maximum current through the track load cannot exceed the bridge specs. (2 or 4 Amps). ie 4 or 8 ohms.



EQUALS



0.7 Volts

0.7 Volts

