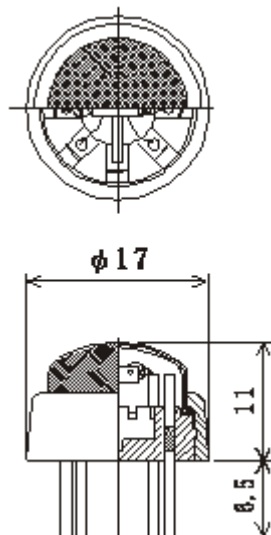


NAP-11AE

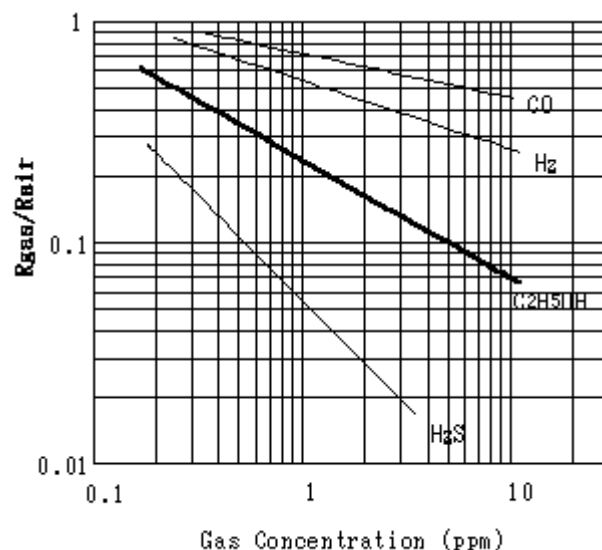
Semiconductor type gas sensor NAP-11AE is as highly sensitive as to detect 1ppm of alcohol contain in the breath, and is used mainly for alcohol checkers. However, as semiconductor type sensors are not good enough for quantitative analysis, it is not adequate for the purpose of drunk-level display. For quantitative displays, our catalytic type gas sensor NAP-66E is recommended.

*** Ratings**

Items	Specifications
Heater supply voltage	DC 5.0±0.25V
Current	DC 120~140mA(5.0V When 5.0V is applied)
Circuit voltage	DC 15V or less
Ambient temperature & humidity in operation	-10~+50°C, 95%RH or less
Ambient temperature & humidity in storage	-20~+60°C, 99%RH or less



Structure & Dimensions

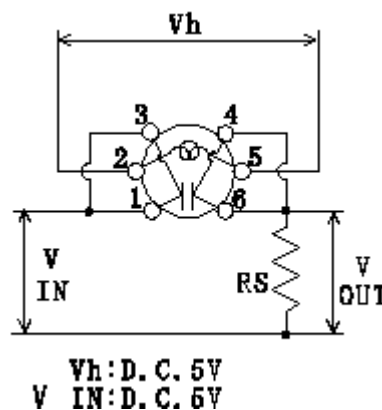


Gas sensitivity characteristics

*** Gas sensitivity characteristics**

Items	Features
Resistance value in clean air	5~100Kohms
Gas sensitivity *	5~20

* S/N ratio on 10% of Ethanol



Measuring circuit

Inquiry

For further information, please contact :
 International Sales Division, Nemoto & Co., Ltd., Tokyo,
 Japan

- Phone :+81-3-3392-7181
- FAX :+81-3-3392-7188
- E-mail : intsales@nemoto.jp or sensor@nemoto.jp

NEMOTO & CO.,LTD

<Webmaster : tmurase@nemoto.co.jp>