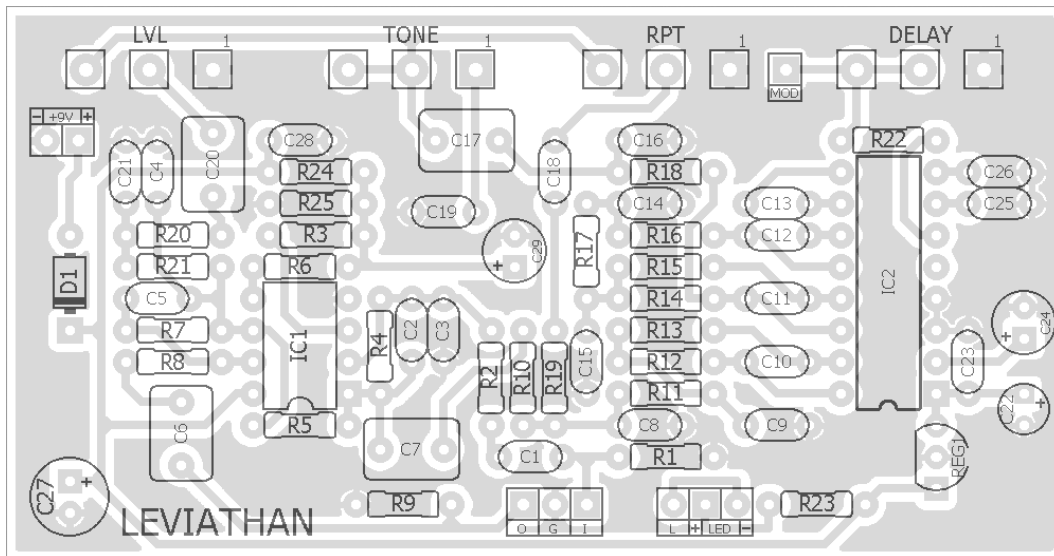


LEVIATHAN

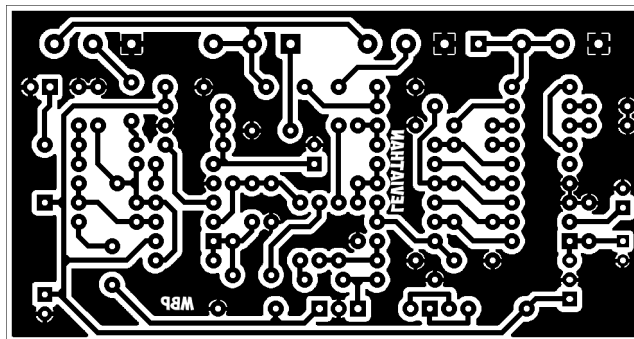
FX TYPE: Delay

Based on the Wampler® Faux Echo™

© 2016 madbeanpedals



3.33" W x 1.76" H



Etcher's Paradise projects are intended for DIY use only! Commercial pedal manufacturing using these materials is strictly forbidden.

| B.O.M. | | | | | |
|-----------|------|------|-------|-----------|---------|
| Resistors | | Caps | | Diodes | |
| R1 | 1M | C1 | 100n | D1 | 1N5817 |
| R2 | 511k | C2 | 5pF | IC's | |
| R3 | 220k | C3 | 47pF | IC1 | TL072 |
| R4 | 1M | C4 | 1n | IC2 | PT2399 |
| R5 | 22k | C5 | 100pF | Regulator | |
| R6 | 1k | C6 | 1uF | REG1 | LM78L05 |
| R7 | 12k | C7 | 1uF | Pots | |
| R8 | 470R | C8 | 10n | RPT | 25kB |
| R9 | 100k | C9 | 10n | TONE | 10kA |
| R10 | 12k | C10 | 680pF | DELAY | 50kB |
| R11 | 12k | C11 | 1n | LVL | 50kB |
| R12 | 12k | C12 | 68n | | |
| R13 | 47k | C13 | 150n | | |
| R14 | 22k | C14 | 10n | | |
| R15 | 12k | C15 | 10n | | |
| R16 | 12k | C16 | 10n | | |
| R17 | 12k | C17 | 1uF | | |
| R18 | 2k7 | C18 | 100n | | |
| R19 | 20k | C19 | 68n | | |
| R20 | 10k | C20 | 1uF | | |
| R21 | 10k | C21 | 100pF | | |
| R22 | 2k2 | C22 | 10uF | | |
| R23 | 4k7 | C23 | 100n | | |
| R24 | 100k | C24 | 47uF | | |
| R25 | 100k | C25 | 100n | | |
| | | C26 | 100n | | |
| | | C27 | 100uF | | |
| | | C28 | 100n | | |
| | | C29 | 10uF | | |

| Shopping List | | | |
|---------------|-----|-------------------|----------|
| Value | QTY | Type | Rating |
| 470R | 1 | Metal/Carbon Film | 1/4W |
| 1k | 1 | Metal/Carbon Film | 1/4W |
| 2k2 | 1 | Metal/Carbon Film | 1/4W |
| 2k7 | 1 | Metal/Carbon Film | 1/4W |
| 4k7 | 1 | Metal/Carbon Film | 1/4W |
| 10k | 2 | Metal/Carbon Film | 1/4W |
| 12k | 7 | Metal/Carbon Film | 1/4W |
| 20k | 1 | Metal/Carbon Film | 1/4W |
| 22k | 2 | Metal/Carbon Film | 1/4W |
| 47k | 1 | Metal/Carbon Film | 1/4W |
| 100k | 3 | Metal/Carbon Film | 1/4W |
| 220k | 1 | Metal/Carbon Film | 1/4W |
| 511k | 1 | Metal/Carbon Film | 1/4W |
| 1M | 2 | Metal/Carbon Film | 1/4W |
| 5pF | 1 | Ceramic | 16v min. |
| 47pF | 1 | Ceramic | 16v min. |
| 100pF | 2 | Ceramic | 16v min. |
| 680pF | 1 | Ceramic | 16v min. |
| 1n | 2 | Film | 16v min. |
| 10n | 5 | Film | 16v min. |
| 68n | 2 | Film | 16v min. |
| 100n | 6 | Film | 16v min. |
| 150n | 1 | Film | 16v min. |
| 1uF | 4 | Film | 16v min. |
| 10uF | 2 | Electrolytic | 16v min. |
| 47uF | 1 | Electrolytic | 16v min. |
| 100uF | 1 | Electrolytic | 16v min. |
| 1N5817 | 1 | | |
| TL072 | 1 | | |
| PT2399 | 1 | | |
| LM78L05 | 1 | | |
| 25kB | 1 | PCB Right Angle | 16mm |
| 10kA | 1 | PCB Right Angle | 16mm |
| 50kB | 2 | PCB Right Angle | 16mm |

1590BB Drill Guide

5.79"W x 6.82"H

