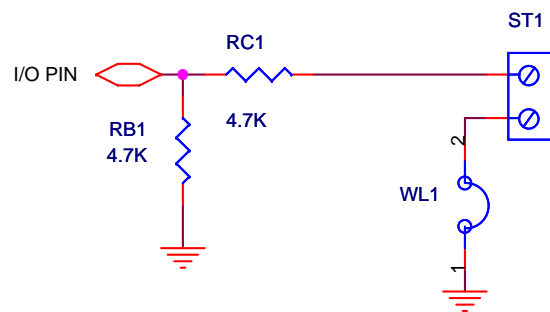
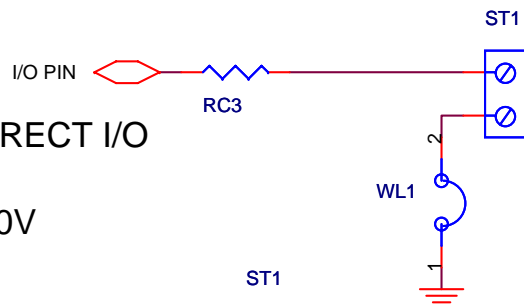


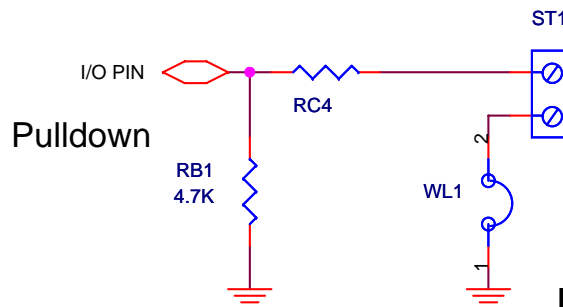
ANALOG 0-10V



DIRECT I/O

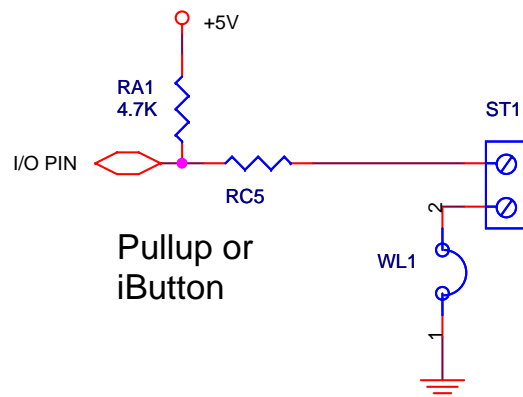


Pulldown

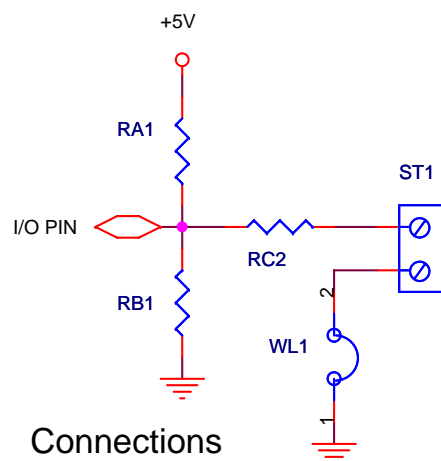


LADYBUG UNIVERSAL I/O 0-5

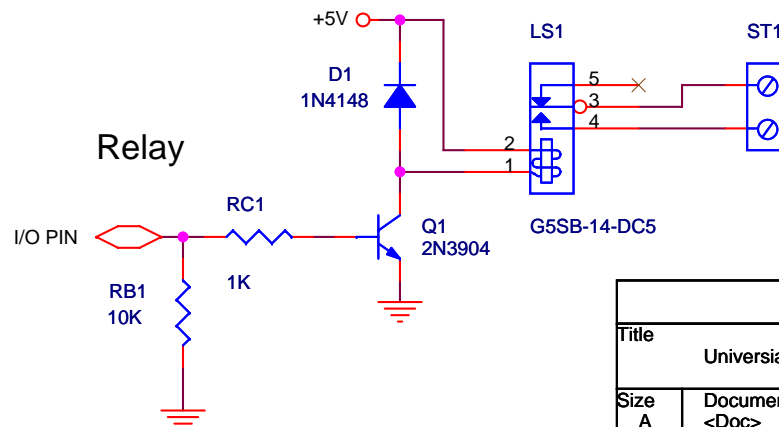
Pullup or iButton



Connections



Relay



Relays and A/D on 1-6 only
OPTOs and open collector on 7&8 only
9 & 10 are relay only

Title		
Universal I/O		
Size	Document Number	Rev
A	<Doc>	<RevCo>
Date:	Friday, February 01, 2008	Sheet 1 of 1