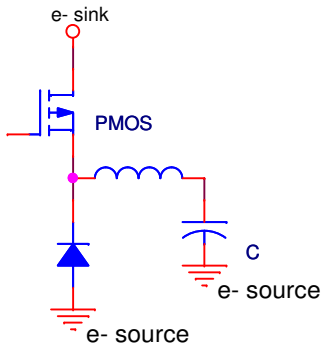
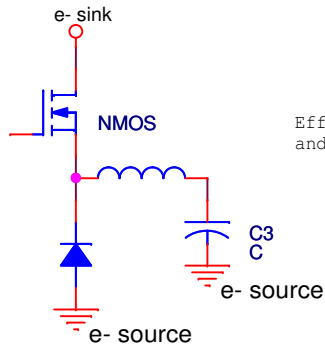


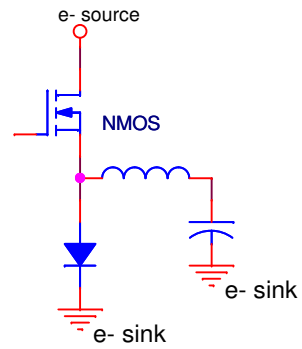
No floating gate drive,  
but inefficient and slow PMOS.



Efficient fast NMOS,  
but floating gate drive  
required.



Efficient fast NMOS,  
and no floating gate drive.



Title			
<Title>			
Size	Document Number		Rev
A	<Doc>		<RevCode>
Date:	Sunday, May 16, 2010		Sheet 1 of 1