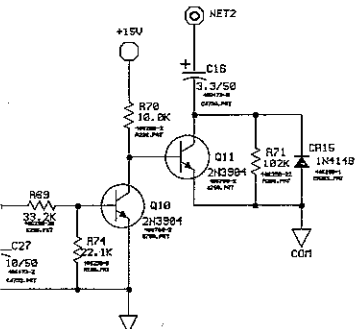


LEGEND

C1,11,14,24	CAPACITOR,CERAMIC, AX, .1 MFD, 50 WDC,20%
C2,7,17,22,23,27	CAPACITOR,ELEC., ALUM, AX, 10 MFD, 50 WDC,-10%/+50%
C3	CAPACITOR,ELEC., ALUM, AX, 4.7 MFD, 50 WDC,20%
C4,5,8,13,18,19,25,26,28,30	CAPACITOR,CERAMIC, AX, .01 MFD, 50 WDC,20%
C5	CAPACITOR,CERAMIC, AX, .0022 MFD, 50 WDC,20%
C9	CAPACITOR,POLYESTER, FILM, .33 MFD, 100 WDC,10%
C10	CAPACITOR,ELEC., ALUM, AX, 22 MFD, 50 WDC,-10%/+50%
② C12,15	CAPACITOR,CERAMIC, RA, 1.0 MFD, 50 WDC,20%
C16,21	CAPACITOR,ELEC., ALUM, AX, 3.3 MFD, 50 WDC,-10%/+75%
C20	CAPACITOR,ELEC., ALUM, AX, 220 MFD, 50 WDC,20%
② C29	CAPACITOR,POLYESTER, FILM, RA., .47 MFD, 400 WDC,10%
CR1,9	DIODE,ZENER, 6.2V, 400mW, 1N753A
CR2,4,11,12	DIODE,SILICON, 400 PRV, 1.5 AMP, 1N5395
CR3,5,6,7,8,10,14,15,16,17	DIODE,SILICON, 100mA, 100 PRV, 1N4148
CR13	DIODE,FAST RECOVERY, 400 U, 8 A, MUR840
② CR18	DIODE,FAST RECOVERY, 200 U, 1 A, MUR120
FT1-14	POINT, TEST, FACTORY C.A.T.
J1	CONNECTOR,12 POSITION, STRAIGHT, .045' SQ. PIN
J2	CONNECTOR,6 POSITION, STRAIGHT, .045' SQ. PIN
J3,7	CONNECTOR,2 POSITION, STRAIGHT, .045' SQ. PIN
J4	CONNECTOR,.082' DIA. PINS, 2 POSITION
J5,6	CONNECTOR,TAB, PC MOUNT, QUICK CONNECT, 1/4 LOOSE PIECE
K1	RELAY,SPDT, 3 A, 24 VAC COIL
Q1,2,3,4,5,7,10,11	TRANSISTOR,NPN, 2N3904, T092
① Q6	TRANSISTOR,DARLINGTON, NPN, 100 U, 5 A, TIP122
Q8	TRANSISTOR,PNP, DARLINGTON AMPLIFIER
Q9	TRANSISTOR,POWER,NPN,780,40W,2N6292
②④ R1,5,8,9,10,16,48,57,60,61,70,73	RESISTOR,PREC, METAL FILM, 10.0K,1/4W,1%
R2,40	RESISTOR,PREC, METAL FILM, 2.21K,1/4W,1%
R3	RESISTOR,PREC, METAL FILM, 80.6K,1/4W,1%
R4,13,75	RESISTOR,PREC, METAL FILM, 4.99K,1/4W,1%
R6,38	RESISTOR,PREC, METAL FILM, 2.32K,1/4W,1%
R7,45,49,55	RESISTOR,PREC, METAL FILM, 2.67K,1/4W,1%
③ R20	RESISTOR,PREC, METAL FILM, 6.81K,1/4W,1%
R11	RESISTOR,PREC, METAL FILM, 2.00K,1/4W,1%
R12,27,29,47,52,74	RESISTOR,PREC, METAL FILM, 22.1K,1/4W,1%
R14,37,51	RESISTOR,PREC, METAL FILM, 10.7K,1/4W,1%
R15,24,25,44,68	RESISTOR,PREC, METAL FILM, 1.00K,1/4W,1%
① R17,54,71	RESISTOR,PREC, METAL FILM, 102K,1/4W,1%
R18,23,39	RESISTOR,PREC, METAL FILM, 4.75K,1/4W,1%
R19,32,33	RESISTOR,PREC, METAL FILM, 27.4 OHM,1/4W,1%
R21	RESISTOR,PREC, METAL FILM, 221K,1/4W,1%
R22	RESISTOR,PREC, METAL FILM, 8.45K,1/4W,1%
④ R42	RESISTOR,PREC, METAL FILM, 580 OHM,1/4W,10%
R28,30,31,50	RESISTOR,PREC, METAL FILM, 243 OHM,1/4W,1%
R34	RESISTOR,CARBON, 1K,1W,10%
R35,59	RESISTOR,PREC, METAL FILM, 25.7K,1/4W,1%
R38,72	RESISTOR,PREC, METAL FILM, 64.9K,1/4W,1%
R41	RESISTOR,PREC, METAL FILM, 8.66K,1/4W,1%
R43,63,64,69	RESISTOR,PREC, METAL FILM, 33.2K,1/4W,1%
R46	RESISTOR,PREC, METAL FILM, 47.5 OHM,1/4W,1%
R53	RESISTOR,PREC, METAL FILM, 6.19K,1/4W,1%
R56	RESISTOR,WIREWOUND, .10 OHM,4W,1%
R58	RESISTOR,PREC, METAL FILM, 21.5K,1/4W,1%
R62	RESISTOR,PREC, METAL FILM, 18.7K,1/4W,1%
③ R26,65	RESISTOR,WIREWOUND, AXIAL, 330 OHM,3.25W,5%
R68	POTENTIOMETER,TRIM, MULTI-TURN, 25K,1/2W,10%
R67	POTENTIOMETER,TRIM, MULTI-TURN, 100K,1/2W,10%
② R76	RESISTOR,CARBON, 10 OHM,2W,10%
T1	TRANSFORMER,PULSE, 1:1, 230 VAC MAX INPUT
TP1,2,3,4,5,6,7,8,9,10,11,12,13,14	POST,MACH. INSERTED, .031 X .062
U1	CIRCUIT,INT,MODULATION, CONTROL, TL494CN
U2	CIRCUIT,INT,OP. AMP. QURD., LM324N
U3	CIRCUIT,INT,VOLTAGE REG. ADJ., +1.2/+37 V.,1.5 AMP,LM317T

- NOTES:
1. ALL RESISTORS ARE 1/4W, 1% UNLESS OTHERWISE SPECIFIED.
 2. CAPACITOR VOLTAGE RATINGS ARE MINIMUM.



CHANGE RECORD		N/CARDS/INDEX		FINISH CODE PER 918176		SEE SHEET 1	
E.C. No.	DATE	FILE NO.	FILE DATE	ACTIVITY	REPLACED BY	REPLACES	REPLACES U.S.
11. 887245	10-2-95	204418A2.SCH	10-31-95				
21. 887659							
UNLESS OTHERWISE SPECIFIED							
DIMENSIONS ARE IN INCHES/ALL DIMENSIONS							
TOLERANCES UNLESS NOTED OTHERWISE							
UNLESS OTHERWISE SPECIFIED							
DO NOT SCALE DIMENSIONS							
SCHEMATIC AND LEGEND							
TITLE BOARD,PC,AY,CONTROL AND MOTOR POWER							
DESIGNER U. SEIFRING J. PRESAR DATE 04-10-95 SCALE NONE							
CHECKED MAYSE APPROVED UUS REVISIONS 5-25-95 DRAW TYPE II							
HOBART TROY, OHIO 45373 U.S.A.							
SHEET 3 204419A							