

**e****Series: BC Energy****Round, Terminal Type****› Features:**

- » Dimensions similar to EN 60086-2 & EN 60285
- » Over 500,000 duty cycles
- » 10 year life capability
- » Higher energy vs. electrolytic
- » Higher power vs. batteries
- » Aluminum construction
- » Round, double ended design
- » Ultra-low internal resistance
- » Resistant against reverse polarity
- » UL Recognized

**› Applications:**

- » Automotive subsystems
- » Consumer electronics
- » Short term UPS and telecom
- » Renewable energy systems
- » Portable power tools

**› Overview:**

The Energy-type ultracapacitor product line gives industrial customers a much wider range of choices to meet their energy storage and power delivery requirements. The cells are specifically engineered to provide cost-effective solutions for automotive subsystems, UPS, renewable energy and portable consumer products.

In addition to meeting or exceeding demanding industrial application requirements for both watt-hours of energy storage and watts of power delivery per kilogram, all of these products will perform reliably for more than five hundred-thousand discharge-recharge cycles.

The proprietary architecture and material science of the BOOSTCAP® products enable continued leadership in controlling costs, flexibility in product offerings and allow application specific performance tailoring.

## › BC Energy Series Specifications:

Item	Product Specification	
Operating Temperature Range	-40 °C to +65 °C	
Storage Temperature Range	-40 °C to +70 °C	
Rated Voltage	2.5 V DC	
Capacitance Tolerance	+/- 20%	
Resistance Tolerance	+/- 25%	
Temperature Characteristics	Capacitance Change	Within $\pm 5\%$ of initial measured value at 25 °C ( at -40 °C)
	Internal Resistance	Within 150% of initial measured value at 25 °C (at -40 °C)
Endurance	After 1000 hours application of rated voltage at 65 °C	
	Capacitance Change	Within 20% of initial specified value
	Internal Resistance	Within 25% of initial specified value
Shelf Life	After 1000 hours storage at 65 °C without load shall meet specification for endurance	
Life Test	After 10 years at rated voltage and 25 °C	
	Capacitance Change	Within 20% of initial specified value
	Internal Resistance	Within 100% of initial specified value
Cycle Test	Capacitors cycled between specified voltage and half rated voltage under constant current at 25 °C (500,000 Cycles)	
	Capacitance Change	Within 20% of initial specified value
	Internal Resistance	Within 100% of initial specified value

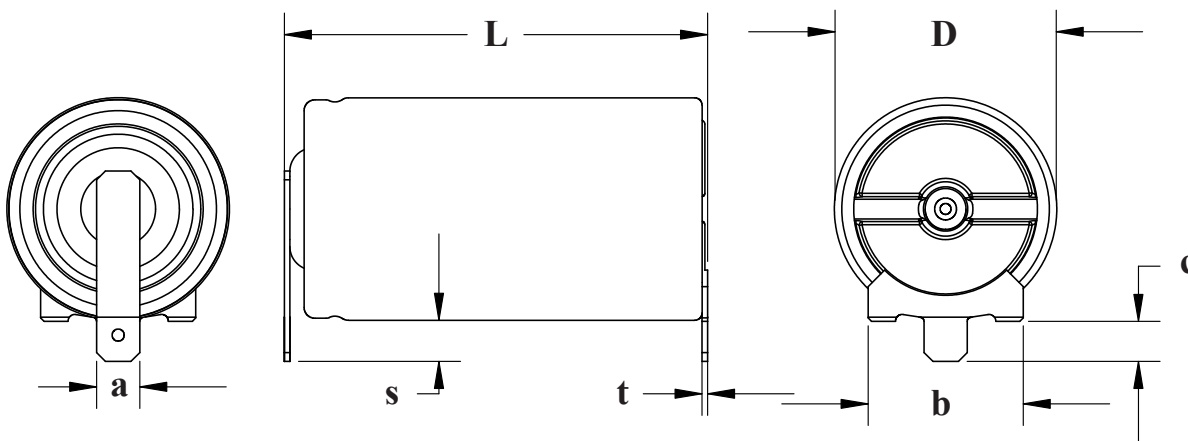
## › BC Energy Product Specifications:

Part Number	Capacitance (F)	ESR, DC (mohm)	ESR, 1khz (mohm)	Ic (mA)
BCAP0140 E250	140	7.20	3.60	0.10
BCAP0350 E250	350	3.20	1.60	1.00

## › BC Energy Product Properties:

Maxwell Part No.	Rth (C/W)	Isc (A)	Emax (Wh/kg)	Pmax (W/kg)	Pd (W/kg)
BCAP0140 E250	13.0	500	4.19	14,900	3,500
BCAP0350 E250	10.9	1500	5.10	16,275	3,900

## › Dimensions:



Part Number	Vol (l)	Mass (g)	Size (mm)						
			L	D	a	b	c	s	t
BCAP0140 E250	.027	29.0	51	26	4.75	16.0	5.9	6.9	0.5
BCAP0350 E250	.050	60.0	60	33	6.40	22.9	5.9	6.9	0.8

Product dimensions and specifications may change without notice. Please contact Maxwell Technologies directly for any technical specifications critical to application.

## › Mounting Recommendations:

Solder tabs to PCB. See application note for further information and slot spacing recommendations

## › Markings

Rated capacitance, rated voltage, part number, manufacturer, positive and negative terminal, warning marking, UL symbol, lot number

## › Additional Technical Information:

Capacitance and ESR, DC measured per document 1007239

$I_c$  = Leakage current after 72 hours, 25°C       $I_{sc}$  = short circuit current (maximum peak current)

$R_{th}$  = Thermal resistance

$$E_{max} = \frac{\frac{1}{2} CV^2}{3600 \times mass}$$

$$P_{max} = \frac{\frac{V^2}{4R (1kHz)}}{mass}$$

$$P_d = \frac{\frac{0.12V^2}{R (DC)}}{mass}$$

Patent Pending

### Worldwide Headquarters

MAXWELL TECHNOLOGIES  
9244 Balboa Avenue • San Diego, 92123 CA, USA  
PHONE: + (1) 858 503 3300  
FAX: + (1) 858 503 3301  
EMAIL: [info@maxwell.com](mailto:info@maxwell.com)

### European Office

MAXWELL TECHNOLOGIES SA  
CH-1728 Rossens • Switzerland  
PHONE: +41 (0) 26 411 85 00  
FAX: +41 (0) 26 411 85 05  
EMAIL: [info@maxwell.com](mailto:info@maxwell.com)

**Maxwell**  
TECHNOLOGIES  
[www.maxwell.com](http://www.maxwell.com)

**Disclaimer of Warranty/Limitation of Liability  
for Uses in Life Support Devices or Critical Systems**

Maxwell Technologies, Inc. and its Affiliates (“Maxwell”) provide no warranties of any kind either express or implied, including (without limitation) the implied warranties of merchantability and fitness, for uses of its products as components in life support devices or critical systems.

“Life support devices” are devices or systems, which (a) are intended for surgical implant into a living body, or (b) support or sustain life, and whose failure to perform when properly used in accordance with the instructions provided in the labeling can be reasonably expected to result in bodily injury to the user. An example of a life support device includes, but is not limited to, a heart pacemaker.

A “critical system” is any system whose failure to perform can affect the safety or effectiveness of a higher level system, or cause bodily or property injury by loss of control of the higher level device or system. An example of a critical system includes, but is not limited to, aircraft avionics.

You agree that Maxwell will not be liable to you for any loss or damages, either actual or consequential, indirect, punitive, special, or incidental, arising out of or relating to these terms.

These terms are a non-waivable condition to any contract that Maxwell may enter into. An exception to these terms may only be authorized in a writing signed by the President of Maxwell or a duly authorized officer.

**Worldwide Headquarters**

MAXWELL TECHNOLOGIES  
9244 Balboa Avenue • San Diego, 92123 CA, USA  
PHONE: +(1) 858 503 3300  
FAX: +(1) 858 503 3301  
EMAIL: [info@maxwell.com](mailto:info@maxwell.com)

**European Office**

MAXWELL TECHNOLOGIES SA  
CH-1728 Rossens • Switzerland  
PHONE: +41 (0) 26 411 85 00  
FAX: +41 (0) 26 411 85 05  
EMAIL: [info@maxwell.com](mailto:info@maxwell.com)