

LM25117 Evaluation Board

National Semiconductor
Application Note 2112
Eric Lee
May 25, 2011



Introduction

The LM25117 evaluation board provides the design engineer with a fully functional synchronous buck converter based on Emulated Current Mode Control to evaluate the LM25117 controller IC. The evaluation board provides 3.3V output with a 9A current capability in addition with average output current information. The input voltage ranges from 6V to 36V.

Performance of the Evaluation Board

- Input Voltage Range: 6V to 36V
- Output Voltage: 3.3V
- Output Current: 9A
- Nominal Switching Frequency: 230 kHz
- Synchronous Buck Operation: Yes
- Diode Emulation Mode: Yes
- Hiccup Mode Overload Protection: Yes
- External VCC Sourcing: No
- Current Monitor Output: Yes

Powering and Loading Consideration

PROPER BOARD CONNECTION

When applying power to the LM25117 evaluation board certain precautions need to be followed. A misconnection can damage the assembly.

The input connection is made to the J1 (VIN+) and J2 (VIN-) connectors. The load is connected to the J3 (VOUT+) and J4 (VOUT-). Be sure to choose the correct connector and wire size when attaching the source power supply and the load. The average output current can be monitored at J5. Use RCA jack to remotely sense the current monitor output. TP5 is directly connected to UVLO and can be used as an input of the remote shutdown signal.

SOURCE POWER

The power supply and cabling must present low impedance to the evaluation board. Insufficient cabling or a high

impedance power supply will droop during power supply application with the evaluation board inrush current. If large enough, this droop will cause a chattering condition upon power up. During power down, this insufficient cabling or a high impedance power supply will overshoot, results in a non-monotonic decay on the output.

An additional external bulk input capacitor may be required unless the output voltage droop/overshoot of the source power supply is less than 0.5V.

LOADING

When using an electronic load, it is strongly recommended to power up the evaluation board at light load and then slowly increase the load. If it is desired to power up the evaluation board at maximum load, resistor bank must be used. In general, electronic load is best suited for monitoring steady state waveforms.

AIR FLOW

Prolonged operation with high input voltage at full power will cause the MOSFETs to overheat. A fan with a minimum of 200LFM should be always provided.

QUICK START-UP PROCEDURE

STEP 1: Set the power supply current limit to at least 11A. Connect the power supply to J1 and J2.

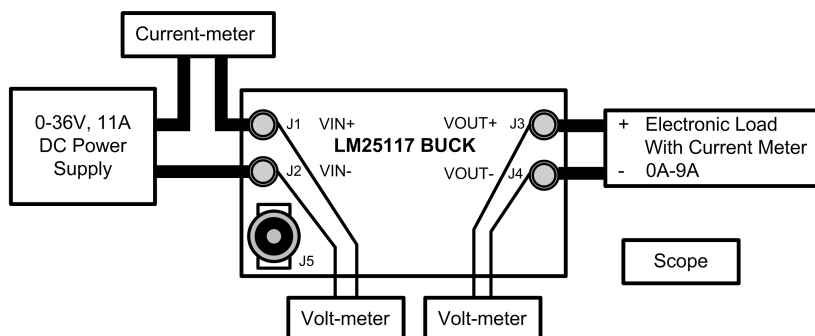
STEP 2: Connect the load with a 9A capacity between J3 and J4.

STEP 3: Set input voltage to 6V and turn it on.

STEP 4: Measure the output voltage. The output should be regulated at 3.3V.

STEP 5: Slowly increase the load current while monitoring the output voltage. The output should remain in regulation up to full load current.

STEP 6: Slowly sweep the input voltage from 6V to 36V while monitoring the output voltage. The output should remain in regulation.



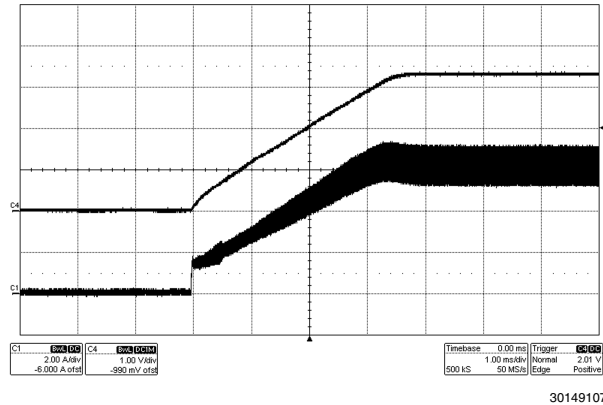
30149106

FIGURE 1. Typical Evaluation Setup

Waveforms

SOFT START

When applying power to the LM25117 evaluation board a certain sequence of events occurs. Soft-start capacitor and other components allow for a linear increase in output voltage. [Figure 2](#) shows the output voltage during a typical start-up with a load of 0.5Ω



Conditions:

Input Voltage = 24VDC

0.5Ω Load on the output

Traces:

Top Trace: Output Voltage, Volt/div = 1V

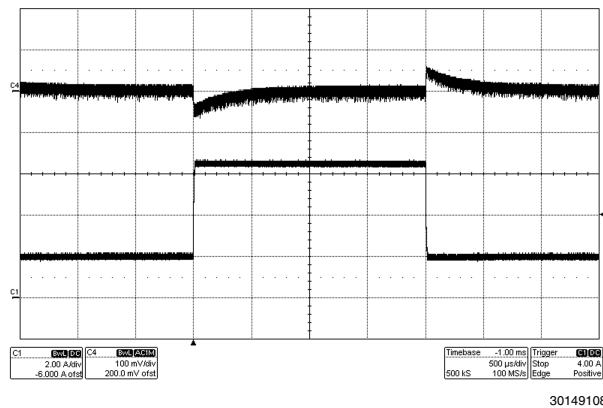
Bottom Trace: Inductor Current, Amp/div=2A

Horizontal Resolution = 1ms/div

FIGURE 2. Start-Up with Resistive Load

LOAD TRANSIENT

[Figure 3](#) shows the transient response for a load change from 2A to 6.5A. The upper waveform shows output voltage droop and overshoot during the sudden change in output current shown by the lower waveform.



Conditions:

Input Voltage = 24VDC

Output Current 2A to 6.5A

Traces:

Top Trace: Output Voltage

Volt/div = 100mV, AC coupled

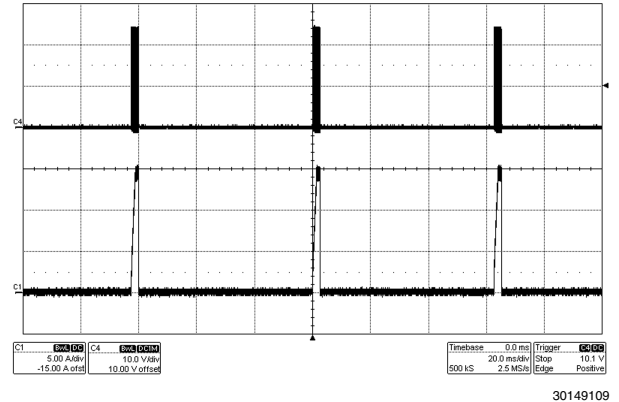
Bottom Trace: Load Current, Amp/div = 2A

Horizontal Resolution = 0.5ms/div

FIGURE 3. Load Transient Response

OVERLOAD PROTECTION

The evaluation board is configured with hiccup mode overload protection. The restart time can be programmed by C20 restart capacitor. [Figure 4](#) shows hiccup mode operation in the event of an output short.



Conditions:

Input Voltage = 24VDC

Output Short

Traces:

Top Trace: SW Voltage Volt/div = 10V

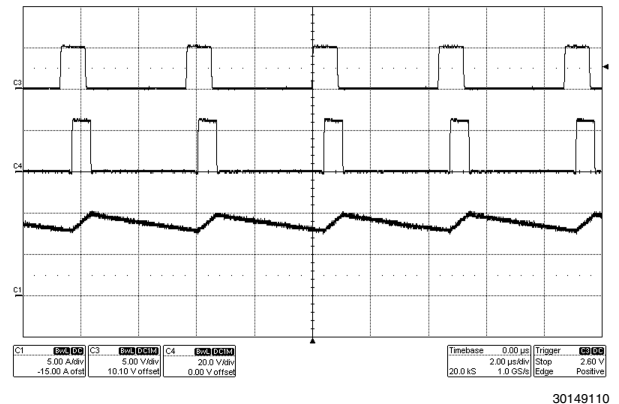
Bottom Trace: Inductor Current, Amp/div = 5A

Horizontal Resolution = 20ms/div

FIGURE 4. Short Circuit

EXTERNAL CLOCK SYNCHRONIZATION

A TP3 (SYNC) test point has been provided on the evaluation board in order to synchronize the internal oscillator to the external clock. [Figure 5](#) shows the synchronized switching operation.



Conditions:

Input Voltage = 24VDC

Load Current = 9A

Traces:

Top Trace: SYNC pulse, 20% duty cycle, Volt/div = 5V

Middle Trace: SW voltage, Volt/div = 20V

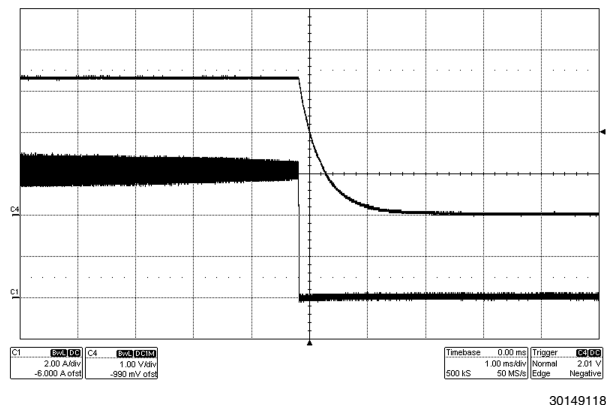
Bottom Trace: Inductor Current, Amp/div = 5A

Horizontal Resolution = 2 μ s/div

FIGURE 5. Clock Synchronization

SHUTDOWN

Figure 6 shows the shutdown procedure by powering off the source power. When UVLO pin voltage is less than 1.26V, the switching stops and soft-start capacitor is discharged by internal switches.



Conditions:

Input Voltage = 24VDC

0.5Ω Load on the Output

Traces:

Top Trace: Output Voltage, Volt/div = 1V

Bottom Trace: Inductor Current, Amp/div = 2A

Horizontal Resolution = 1ms/div

FIGURE 6. Shutdown

Performance Characteristics

Figure 7 shows the efficiency curves. During the efficiency measurement, monitor the current into and out of the evaluation board and monitor the voltage directly at the input and output terminals of the evaluation board.

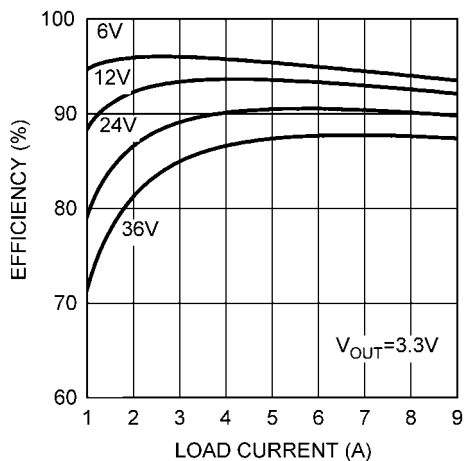


FIGURE 7. Typical Efficiency vs Load Current

Board Configuration

LOOP RESPONSE

TP6 and TP7 have been provided in order to measure the loop transfer function. Refer to AN-1889 for detail information about the loop transfer function measurement.

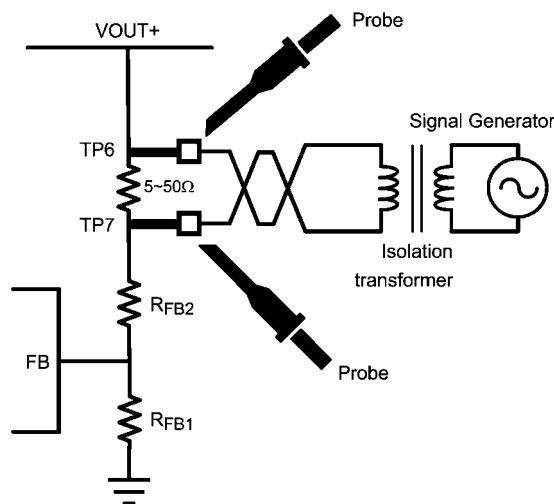


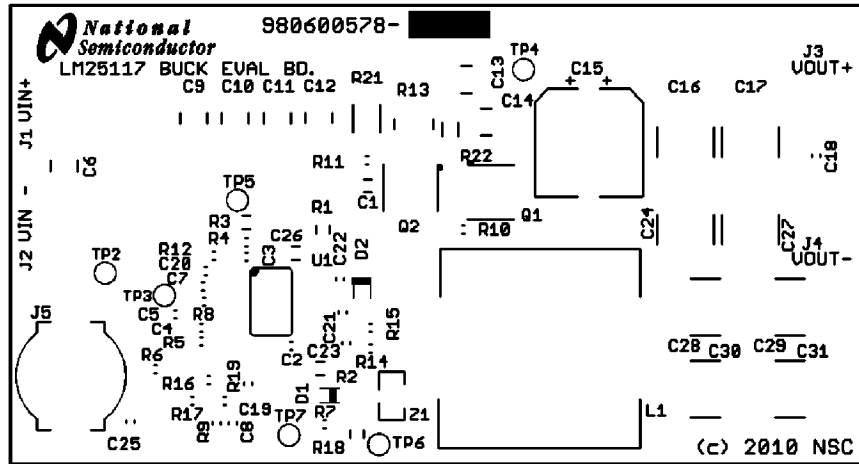
FIGURE 8. Loop Response Measurement Setup



Bill of Materials

Part	Value	Package	Part Number	Manufacturer
C1	470pF, 100V, C0G	0805	C2012C0G2A471J	TDK
C2	820pF, 50V, C0G	0603	C1608C0G1H821J	TDK
C3, C5	100pF, 50V, C0G	0603	C1608C0G1H101J	TDK
C4, C23	NU	0603		
C6, C9, C10, C11, C12, C13, C14	2.2μF, 50V, X7R	1210	C3225X7R1H225K	TDK
C7	0.047μF, 16V, X7R	0603	C1608X7R1C473K	TDK
C8	0.01μF, 25V, C0G	0603	C1608C0G1E103J	TDK
C15	680μF, 6.3V, 10mΩ	Φ10	APXA6R3ARA681MJC0G	UNITED CHEMICON
C16, C17	22μF, 16V, X7R	2220	C5750X7R1C226M	TDK
C18, C21	1μF, 16V, X7R	0603	C1608X7R1C105K	TDK
C19	150pF, 50V, C0G	0603	C1608C0G1H151J	TDK
C20, C22	0.47μF, 25V, X7R	0603	GRM188R71E474KA12	MURATA
C24, C27, C28, C29, C30, C31	NU	2220		
C25	1000pF, 50V, X7R	0603	C1608X7R1H102K	TDK
C26	0.47μF, 50V, X7R	0805	GRM21BR71H474KA88L	MURATA
R1	0 ohm	0805	MCR10EZPJ000	ROHM
R2	105k, 1%	0805	CRCW0805105KFKEA	VISHAY
R3	49.9k, 1%	0805	CRCW080549K9FKEA	VISHAY
R4	14k, 1%	0603	CRCW060314K0FKEA	VISHAY
R5, R6, R7, R12	NU	0603		
R11, R14, R15	0 ohm	0603	MCR03EZPJ000	ROHM
R8	22.1k, 1%	0603	CRCW060322K1FKEA	VISHAY
R9	27.4k, 1%	0603	CRCW060327K4FKEA	VISHAY
R10	2.49 ohm, 1%	0603	CRCW06032R49FKEA	VISHAY
R13	0.008 ohm, 1W, 1%	0815	RL3720WT-R008-F	SUSUMU
R16	1.05k ohm, 1%	0603	CRCW06031K05FKEA	VISHAY
R17	3.24k, 1%	0603	CRCW06033K24FKEA	VISHAY
R18	41.2 ohm, 1%	0805	CRCW080541R2FKEA	VISHAY
R19	5.1k, 5%	0603	CRCW06035K10JNEA	VISHAY
R21	10 ohm, 1%	2010	CRCW201010R0FKEF	VISHAY
R22	NU	1206		
D1	NU	PowerDI323		
D2	60V, 1A	SOD123F	PMEG6010CEH	NXP
Z1	NU	SOT89		
L1	6.8μH, 18.5A / 27A	18.2x18.3	7443556680	WE
Q1, Q2	40V, 58A	PowerPAK SO-8	SI7884BDP	VISHAY
U1		TSSOP-20EP	LM25117	NSC
J1, J2, J3, J4	Terminal-Turret		1509	KEYSTONE
J5	RCA Jack, Blue		RCJ-025	CUI
TP2, TP3, TP4, TP5, TP6, TP7	Test Point		1040	KEYSTONE

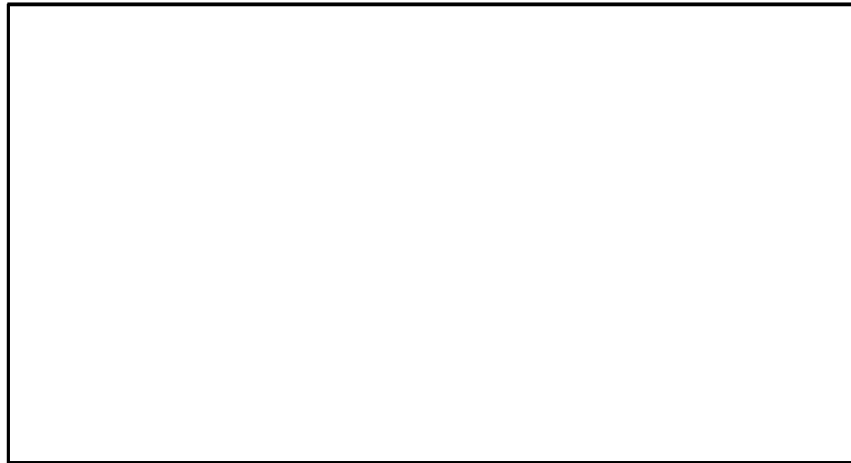
PC Board Layout



TOP SILKSCREEN (.PLC) LAYER AS VIEWED FROM TOP

880600578-001

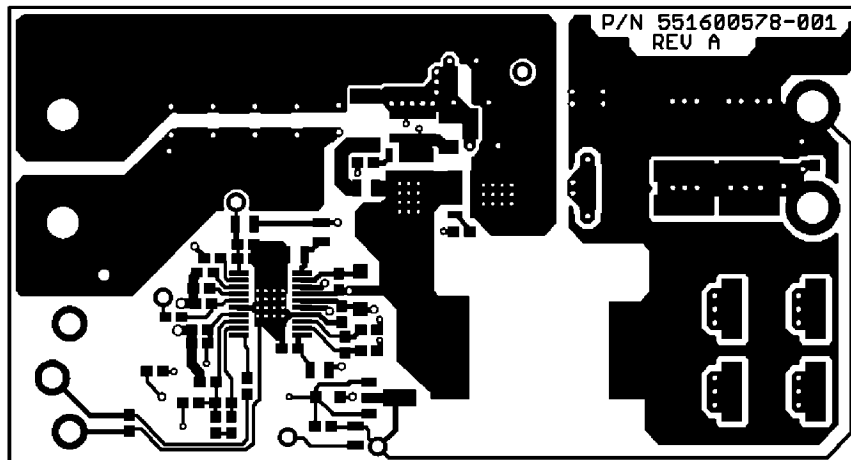
30149111



BOTTOM SILKSCREEN (.BPL) LAYER AS VIEWED FROM TOP

880600578-001

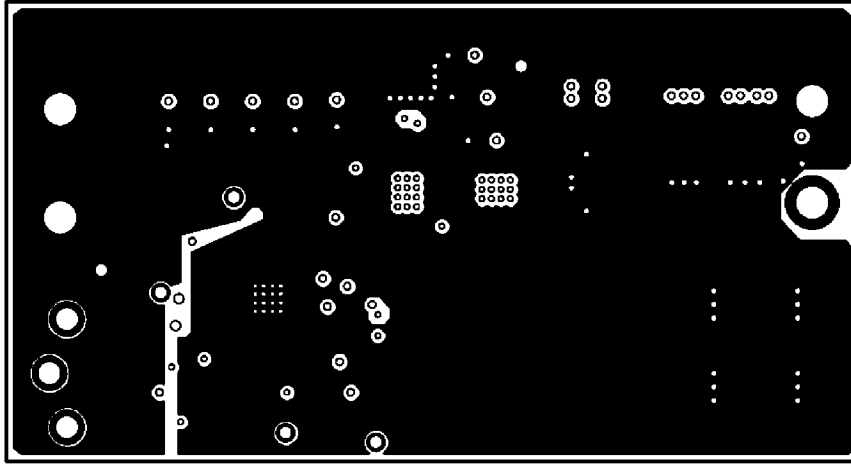
30149112



TOP (.CMP) LAYER AS VIEWED FROM TOP

880600578-001

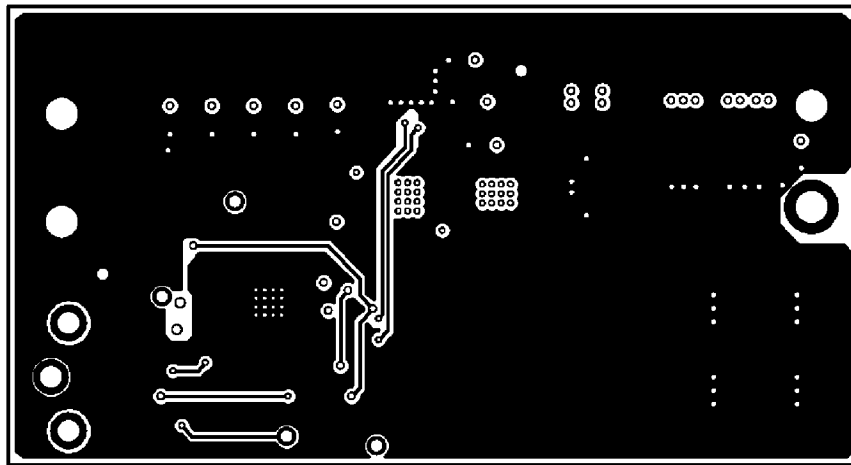
30149113



LAYER 2 (LY2) AS VIEWED FROM TOP

880600578-001

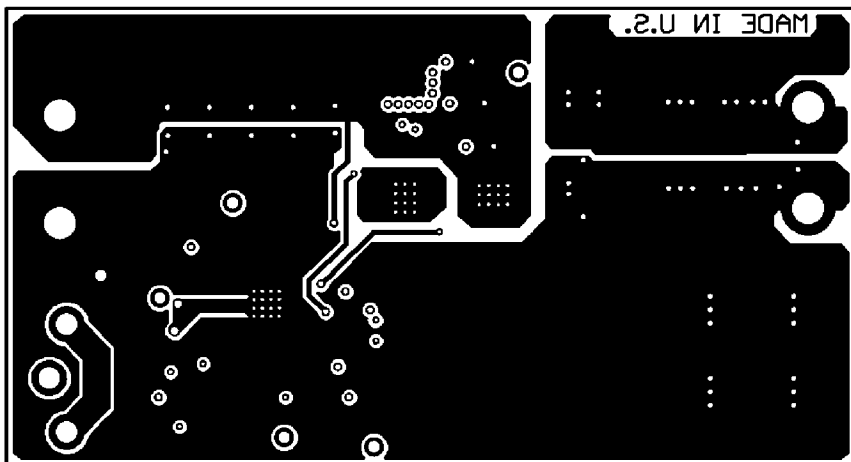
30149114



LAYER 3 (LY3) AS VIEWED FROM TOP

880600578-001

30149115



BOTTOM (SOL) LAYER AS VIEWED FROM TOP

880600578-001

30149116

For more National Semiconductor product information and proven design tools, visit the following Web sites at:
www.national.com

Products		Design Support	
Amplifiers	www.national.com/amplifiers	WEBENCH® Tools	www.national.com/webench
Audio	www.national.com/audio	App Notes	www.national.com/appnotes
Clock and Timing	www.national.com/timing	Reference Designs	www.national.com/refdesigns
Data Converters	www.national.com/adc	Samples	www.national.com/samples
Interface	www.national.com/interface	Eval Boards	www.national.com/evalboards
LVDS	www.national.com/lvds	Packaging	www.national.com/packaging
Power Management	www.national.com/power	Green Compliance	www.national.com/quality/green
Switching Regulators	www.national.com/switchers	Distributors	www.national.com/contacts
LDOs	www.national.com/ldo	Quality and Reliability	www.national.com/quality
LED Lighting	www.national.com/led	Feedback/Support	www.national.com/feedback
Voltage References	www.national.com/vref	Design Made Easy	www.national.com/easy
PowerWise® Solutions	www.national.com/powerwise	Applications & Markets	www.national.com/solutions
Serial Digital Interface (SDI)	www.national.com/sdi	Mil/Aero	www.national.com/milaero
Temperature Sensors	www.national.com/tempsensors	SolarMagic™	www.national.com/solarmagic
PLL/VCO	www.national.com/wireless	PowerWise® Design University	www.national.com/training

THE CONTENTS OF THIS DOCUMENT ARE PROVIDED IN CONNECTION WITH NATIONAL SEMICONDUCTOR CORPORATION ("NATIONAL") PRODUCTS. NATIONAL MAKES NO REPRESENTATIONS OR WARRANTIES WITH RESPECT TO THE ACCURACY OR COMPLETENESS OF THE CONTENTS OF THIS PUBLICATION AND RESERVES THE RIGHT TO MAKE CHANGES TO SPECIFICATIONS AND PRODUCT DESCRIPTIONS AT ANY TIME WITHOUT NOTICE. NO LICENSE, WHETHER EXPRESS, IMPLIED, ARISING BY ESTOPPEL OR OTHERWISE, TO ANY INTELLECTUAL PROPERTY RIGHTS IS GRANTED BY THIS DOCUMENT.

TESTING AND OTHER QUALITY CONTROLS ARE USED TO THE EXTENT NATIONAL DEEMS NECESSARY TO SUPPORT NATIONAL'S PRODUCT WARRANTY. EXCEPT WHERE MANDATED BY GOVERNMENT REQUIREMENTS, TESTING OF ALL PARAMETERS OF EACH PRODUCT IS NOT NECESSARILY PERFORMED. NATIONAL ASSUMES NO LIABILITY FOR APPLICATIONS ASSISTANCE OR BUYER PRODUCT DESIGN. BUYERS ARE RESPONSIBLE FOR THEIR PRODUCTS AND APPLICATIONS USING NATIONAL COMPONENTS. PRIOR TO USING OR DISTRIBUTING ANY PRODUCTS THAT INCLUDE NATIONAL COMPONENTS, BUYERS SHOULD PROVIDE ADEQUATE DESIGN, TESTING AND OPERATING SAFEGUARDS.

EXCEPT AS PROVIDED IN NATIONAL'S TERMS AND CONDITIONS OF SALE FOR SUCH PRODUCTS, NATIONAL ASSUMES NO LIABILITY WHATSOEVER, AND NATIONAL DISCLAIMS ANY EXPRESS OR IMPLIED WARRANTY RELATING TO THE SALE AND/OR USE OF NATIONAL PRODUCTS INCLUDING LIABILITY OR WARRANTIES RELATING TO FITNESS FOR A PARTICULAR PURPOSE, MERCHANTABILITY, OR INFRINGEMENT OF ANY PATENT, COPYRIGHT OR OTHER INTELLECTUAL PROPERTY RIGHT.

LIFE SUPPORT POLICY

NATIONAL'S PRODUCTS ARE NOT AUTHORIZED FOR USE AS CRITICAL COMPONENTS IN LIFE SUPPORT DEVICES OR SYSTEMS WITHOUT THE EXPRESS PRIOR WRITTEN APPROVAL OF THE CHIEF EXECUTIVE OFFICER AND GENERAL COUNSEL OF NATIONAL SEMICONDUCTOR CORPORATION. As used herein:

Life support devices or systems are devices which (a) are intended for surgical implant into the body, or (b) support or sustain life and whose failure to perform when properly used in accordance with instructions for use provided in the labeling can be reasonably expected to result in a significant injury to the user. A critical component is any component in a life support device or system whose failure to perform can be reasonably expected to cause the failure of the life support device or system or to affect its safety or effectiveness.

National Semiconductor and the National Semiconductor logo are registered trademarks of National Semiconductor Corporation. All other brand or product names may be trademarks or registered trademarks of their respective holders.

Copyright© 2011 National Semiconductor Corporation

For the most current product information visit us at www.national.com



**National Semiconductor
Americas Technical
Support Center**
Email: support@nsc.com
Tel: 1-800-272-9959

**National Semiconductor Europe
Technical Support Center**
Email: europe.support@nsc.com

**National Semiconductor Asia
Pacific Technical Support Center**
Email: ap.support@nsc.com

**National Semiconductor Japan
Technical Support Center**
Email: jpn.feedback@nsc.com