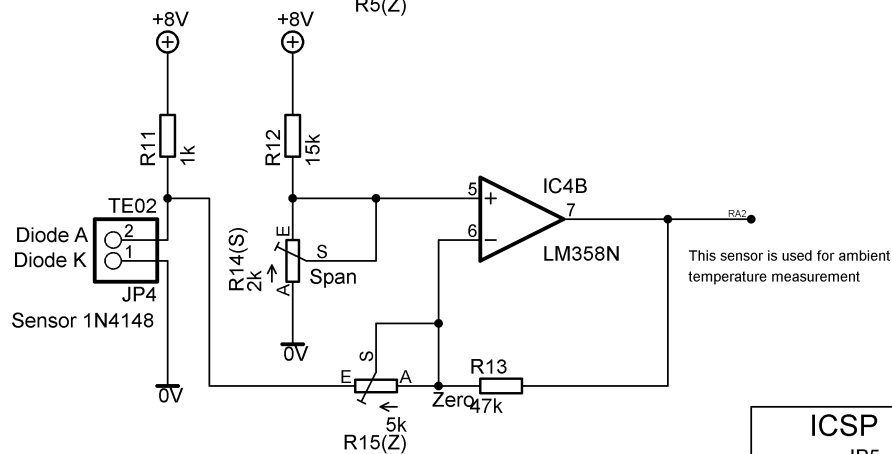
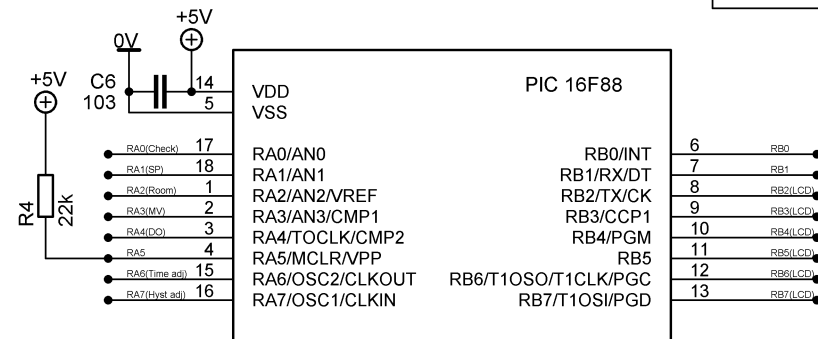
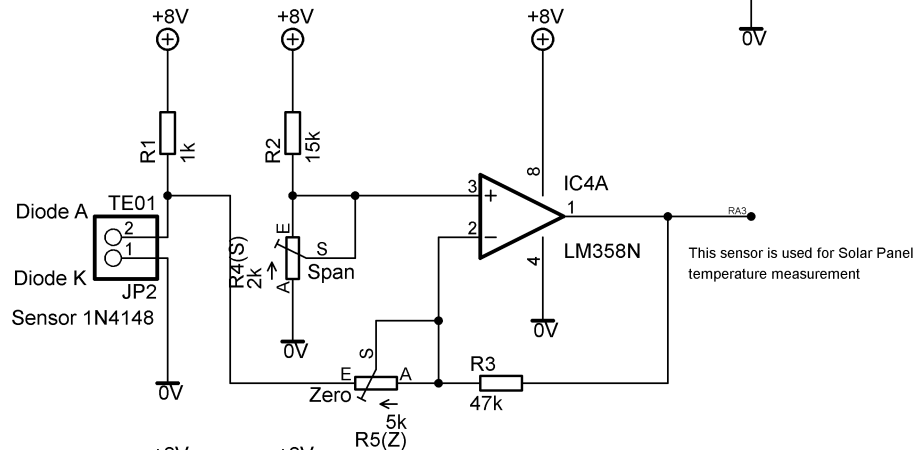
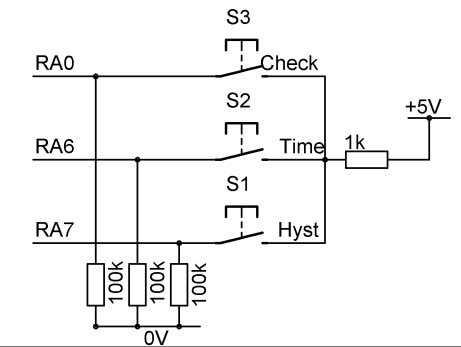
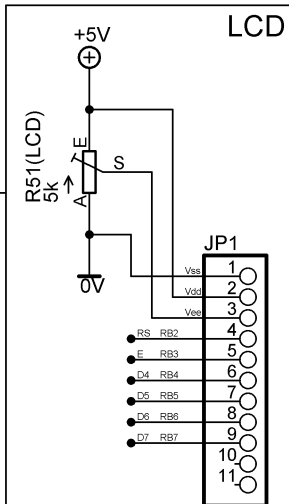


## Input Switches

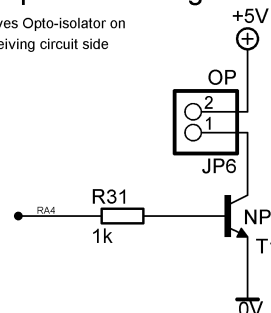


## LCD

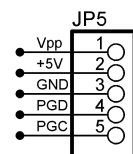


## Output control signal

Drives Opto-isolator on receiving circuit side



## ICSP



Software located at F:\Projects MPlab\AI\_With16F88  
Temperature Measurement using Silicone Diode 1N4148  
as primary measurement element.

TITLE: Temperature

Document Number:

REV:  
3.0

Date: 06-05-2008 18:05:16

Sheet: 1/1