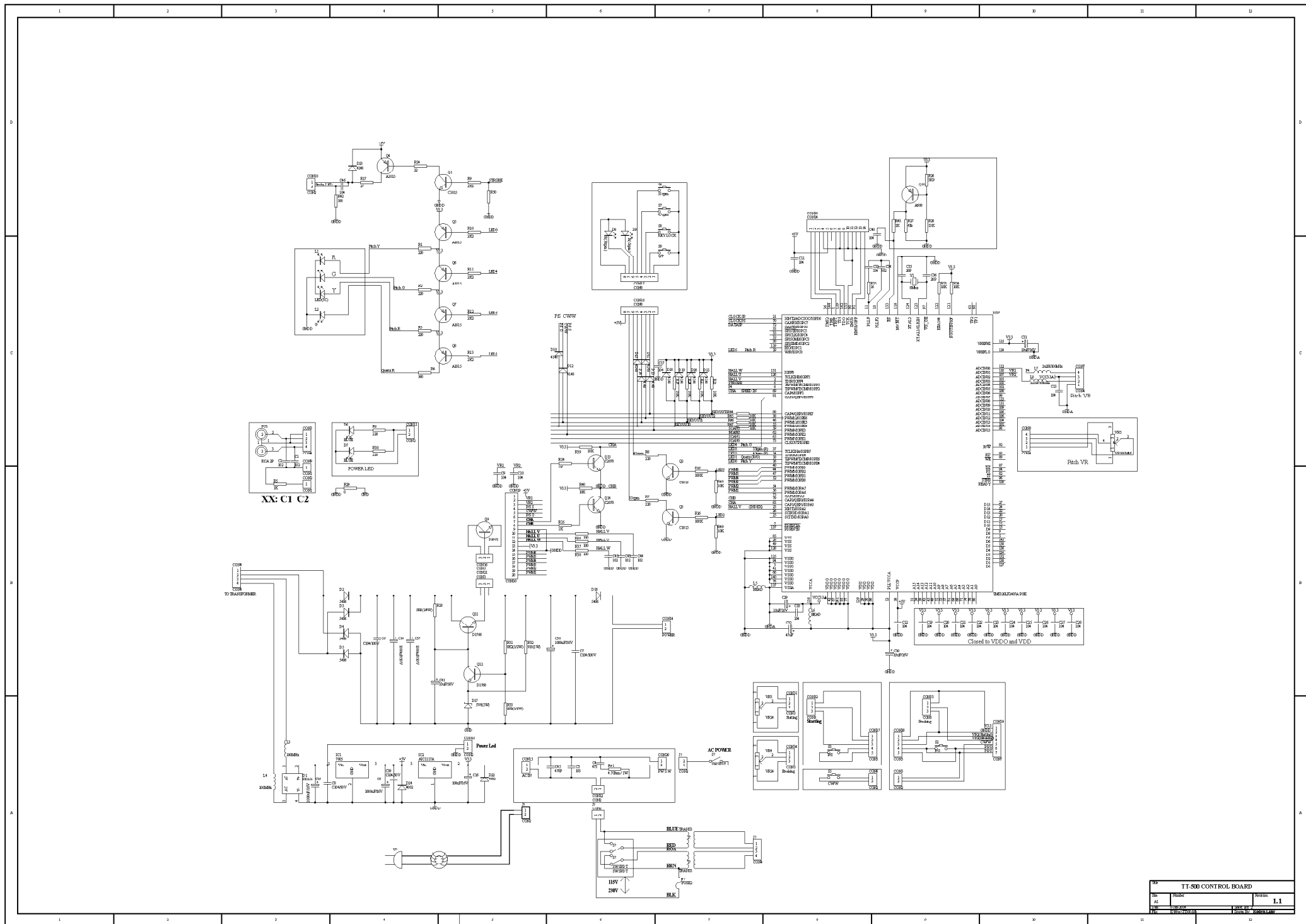


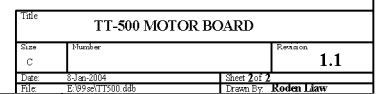
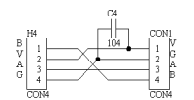
Numark[®]

Service Information

TT500

www.numark.com





Numark TT500 Service Notes.

MD-96407YH
ECN:NE23802

Motor Assembly, Direct Drive

Change R2,R4,R6,R7,R12 and R16 from 1K ohm to 3.9K ohm.

This change was introduced to reduce possible failures of
Mosfets Q1 to Q6 (IRML5103).

ECN effective in production from serial No: (21)N10411314101103
2nd Nov 2004