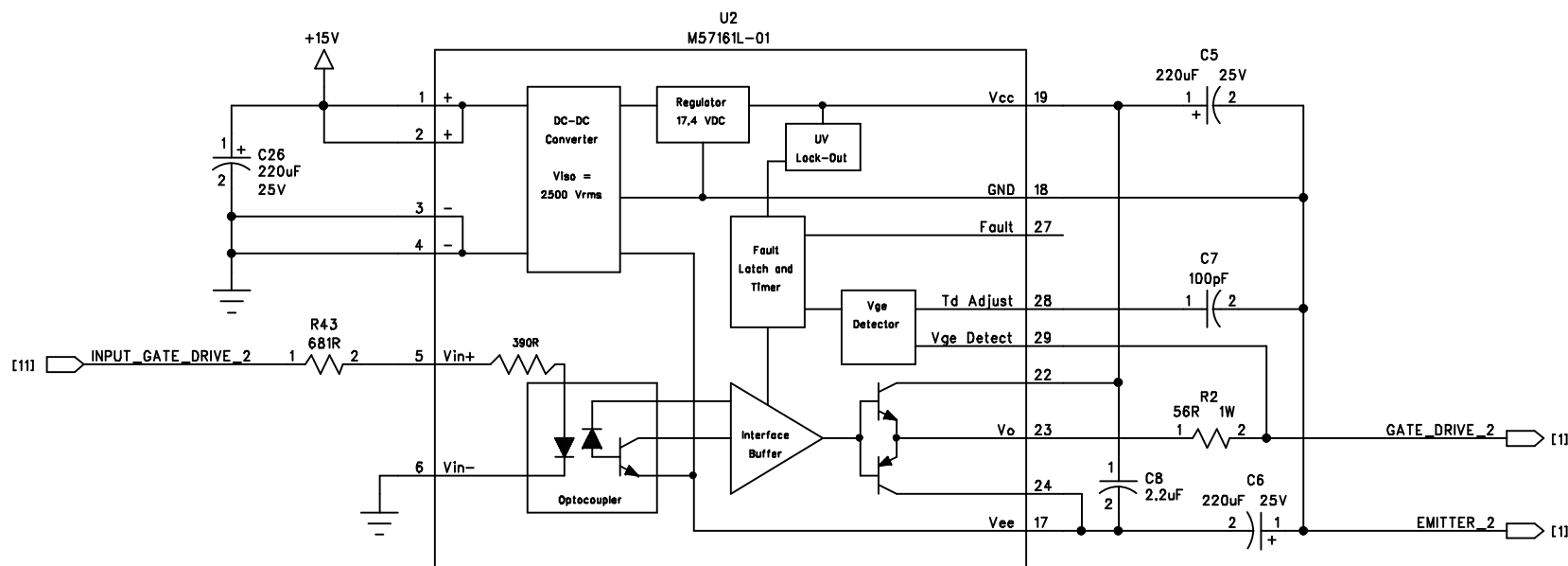
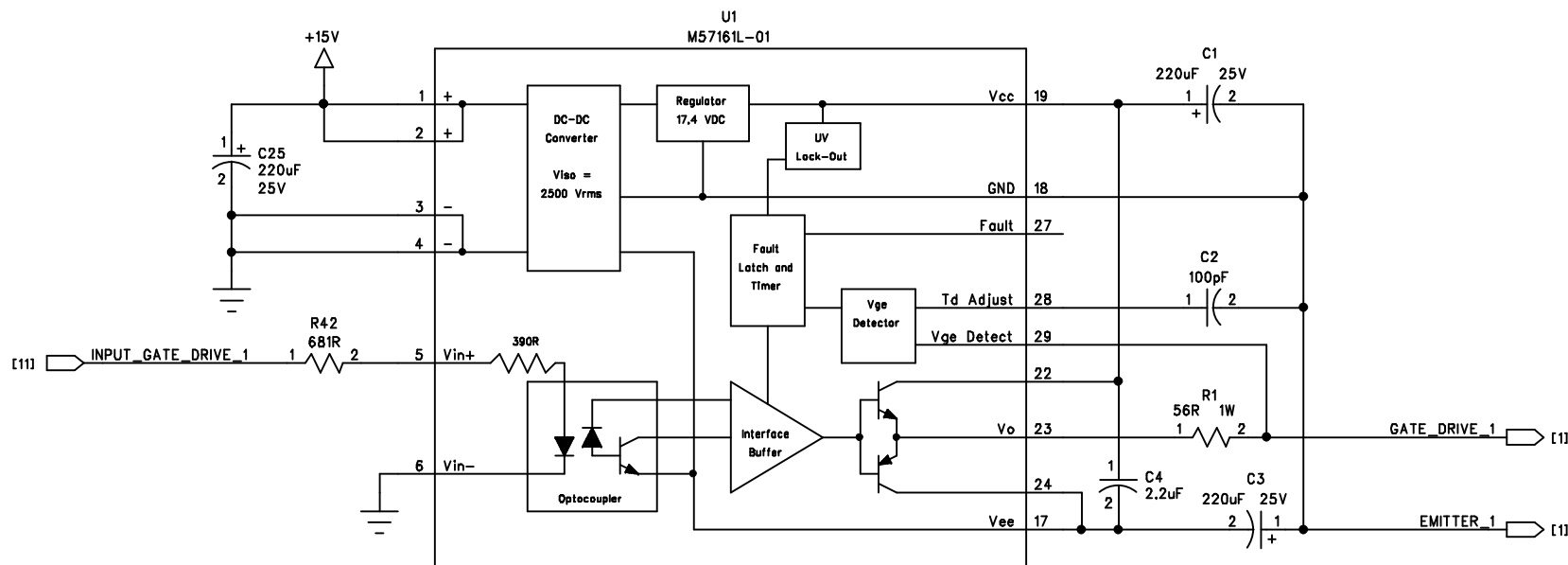
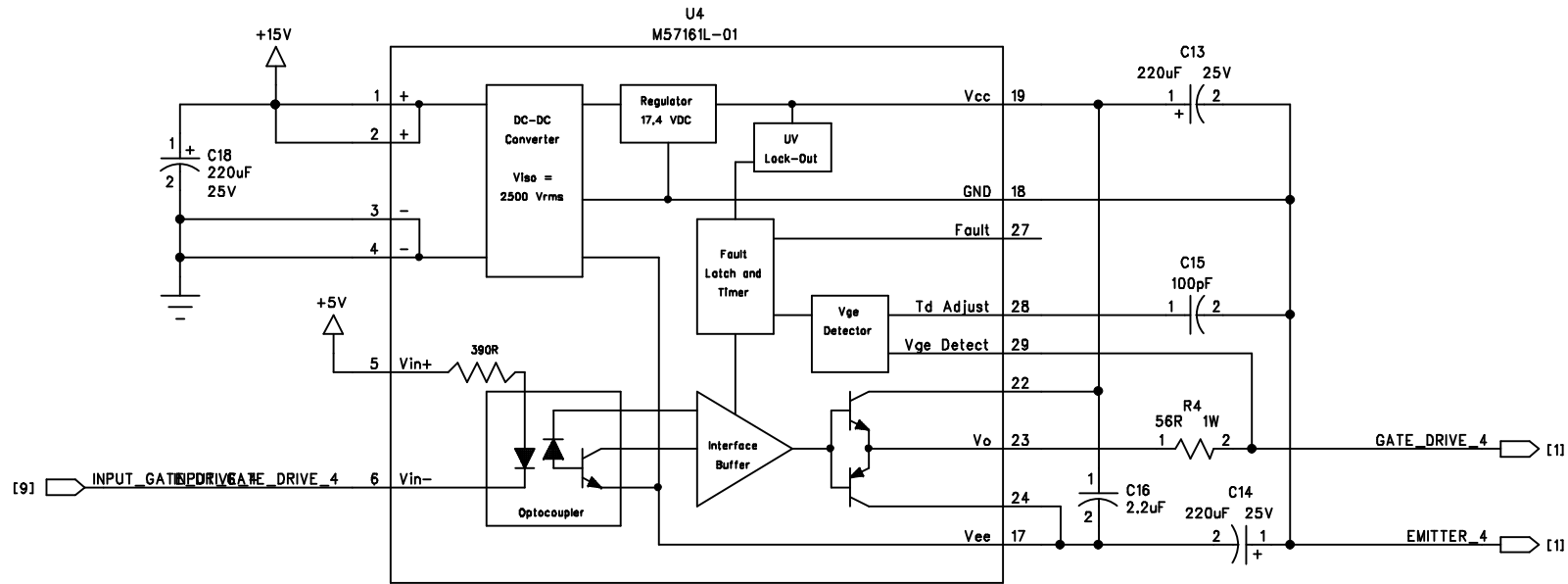
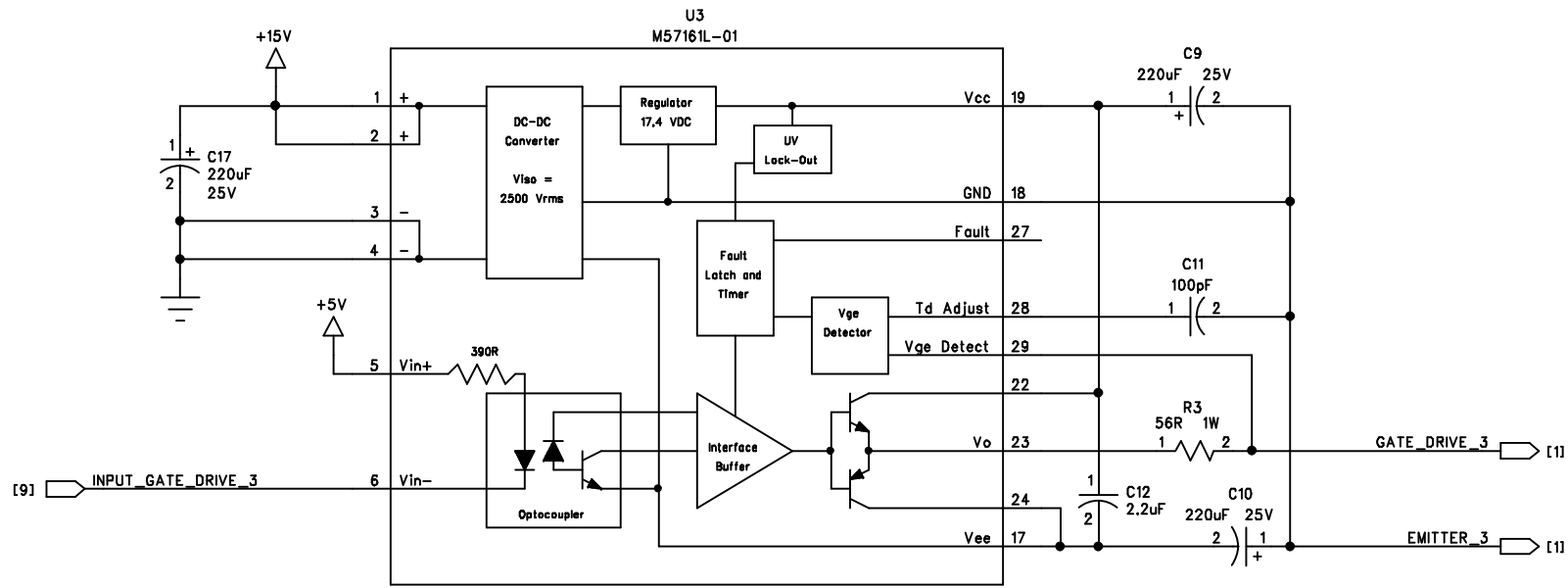


Approvals		Date	Title:	
Drawn:	VG	05/18/2009	<b>Grid-Tie Inverter Signal Conditioning</b>	
Checked:			Size: A	Rev. B
Approved:			Scale:	Sheet: 1 of 11



# DC Boost IGBT Drivers

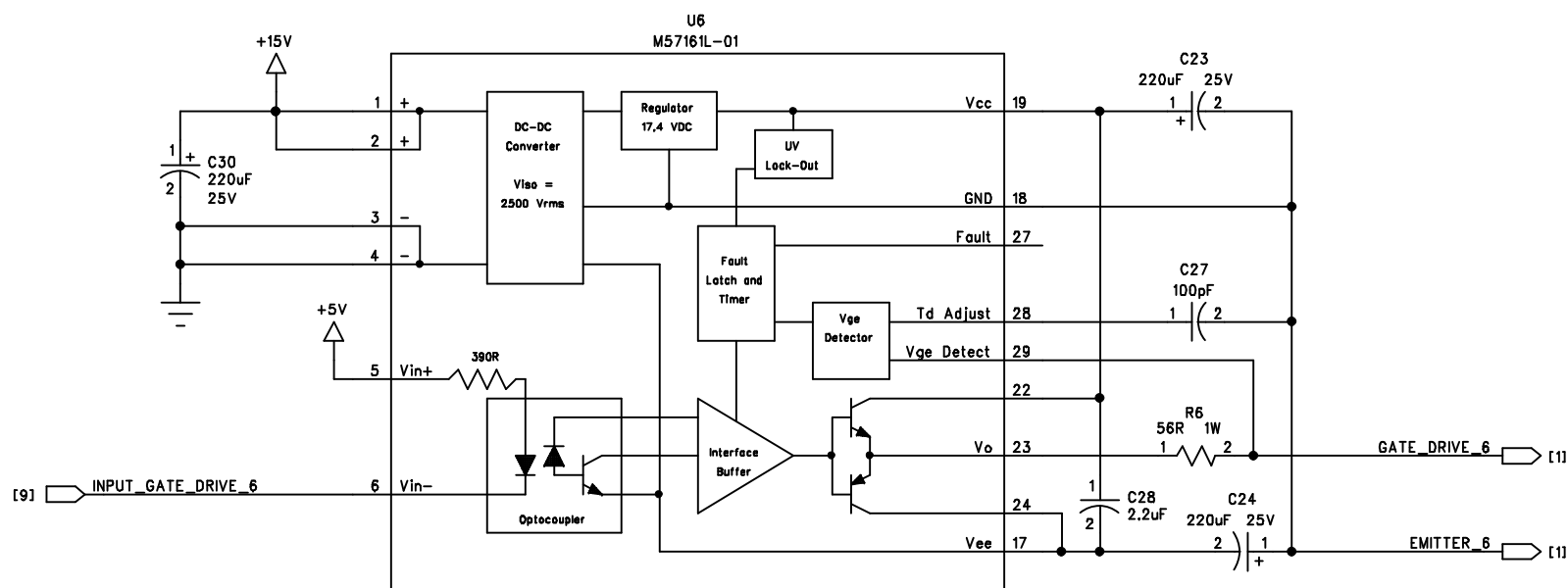
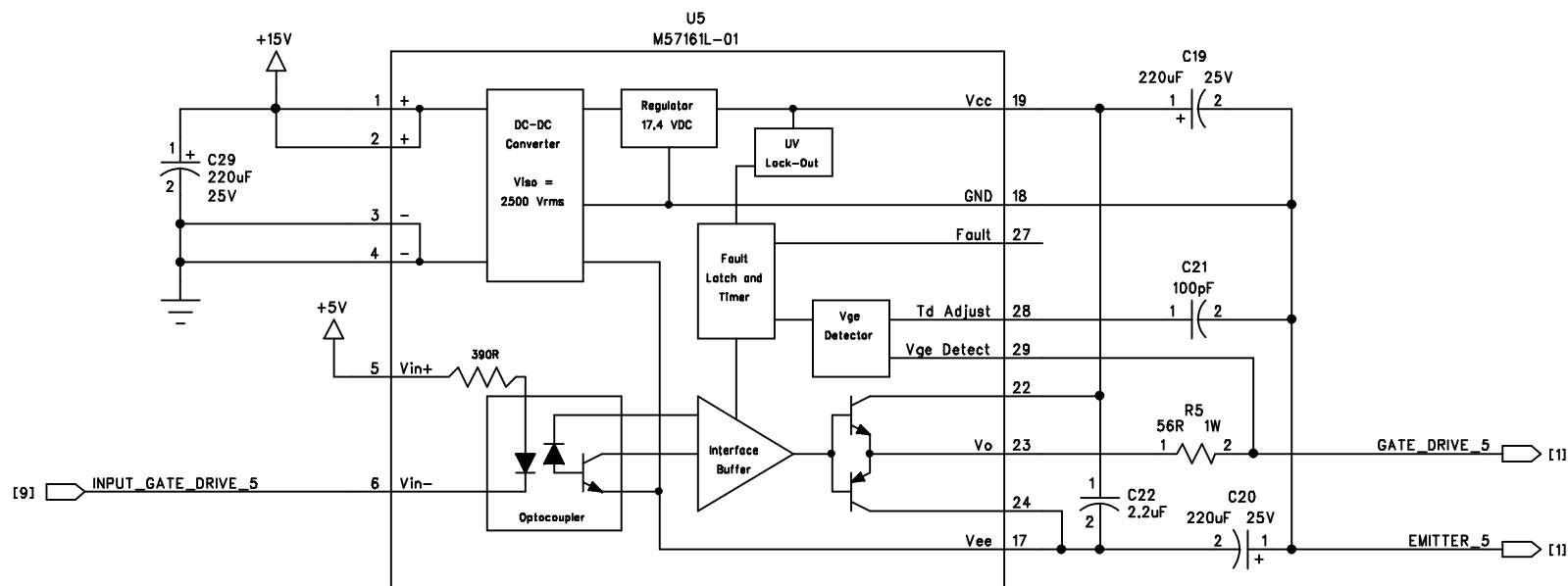
Part Number:
Sheet: 2 of 11



## H-Bridge IGBT Drivers

Part Number:

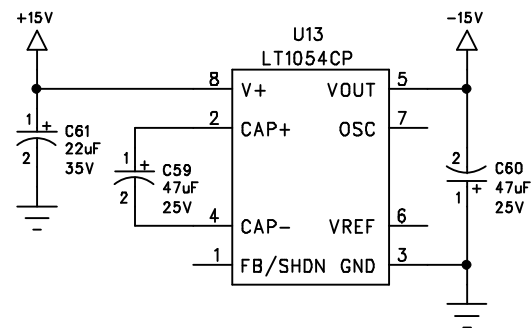
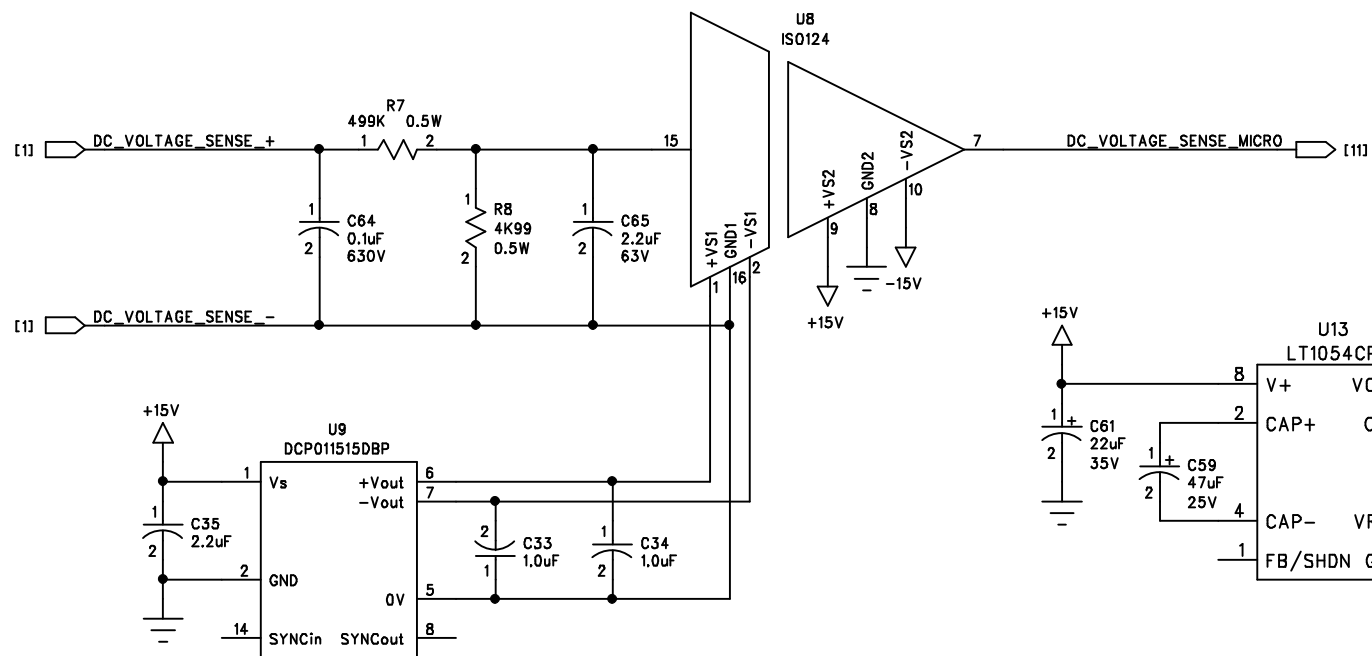
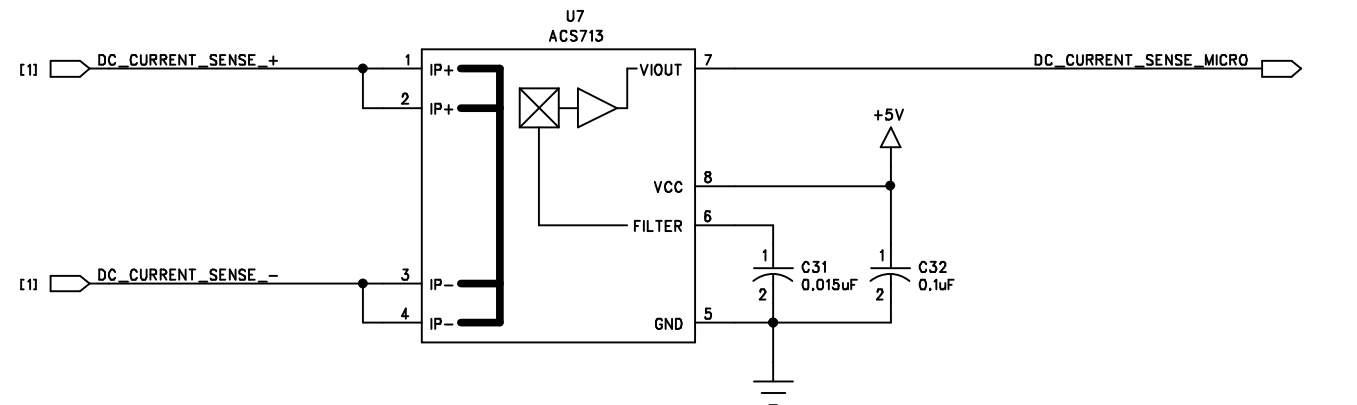
Sheet: 3 of 11



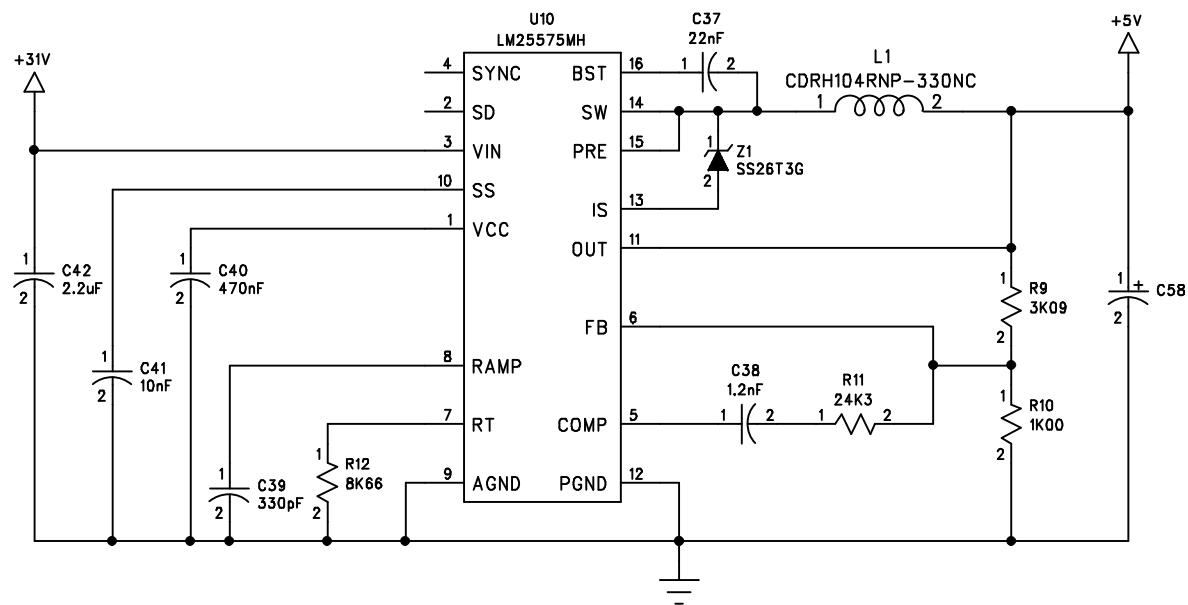
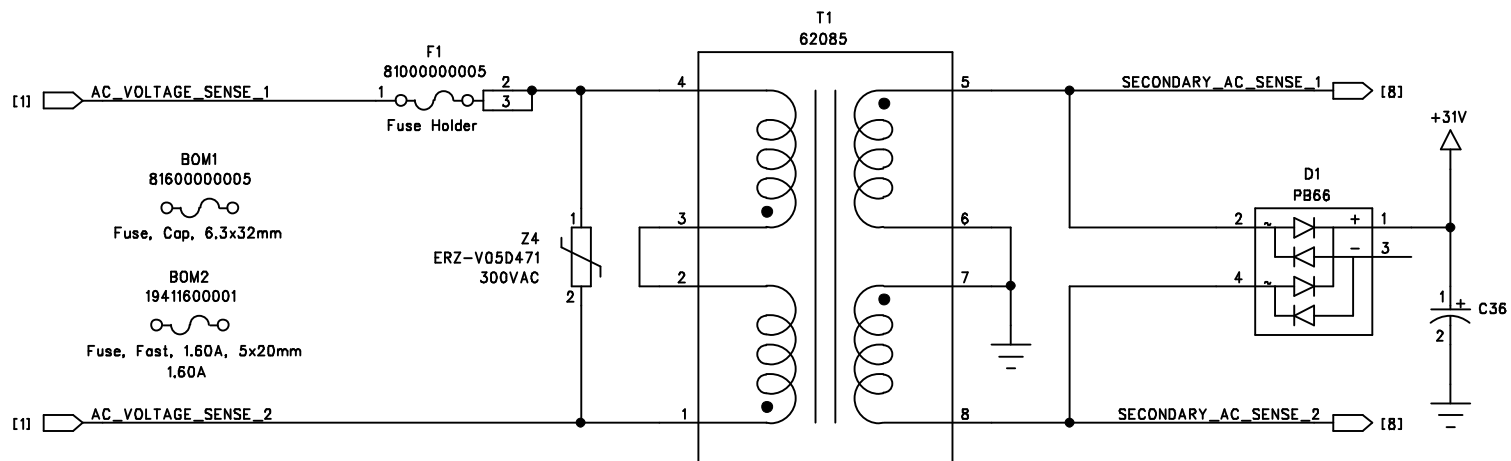
## H-Bridge IGBT Drivers

Part Number:

Sheet: 4 of 11



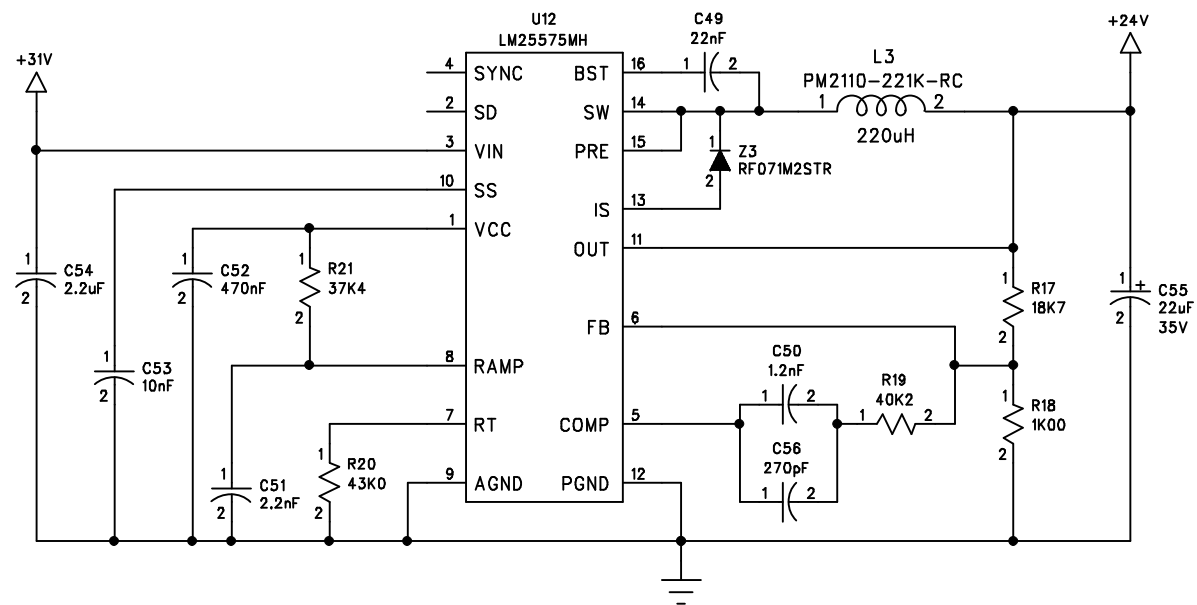
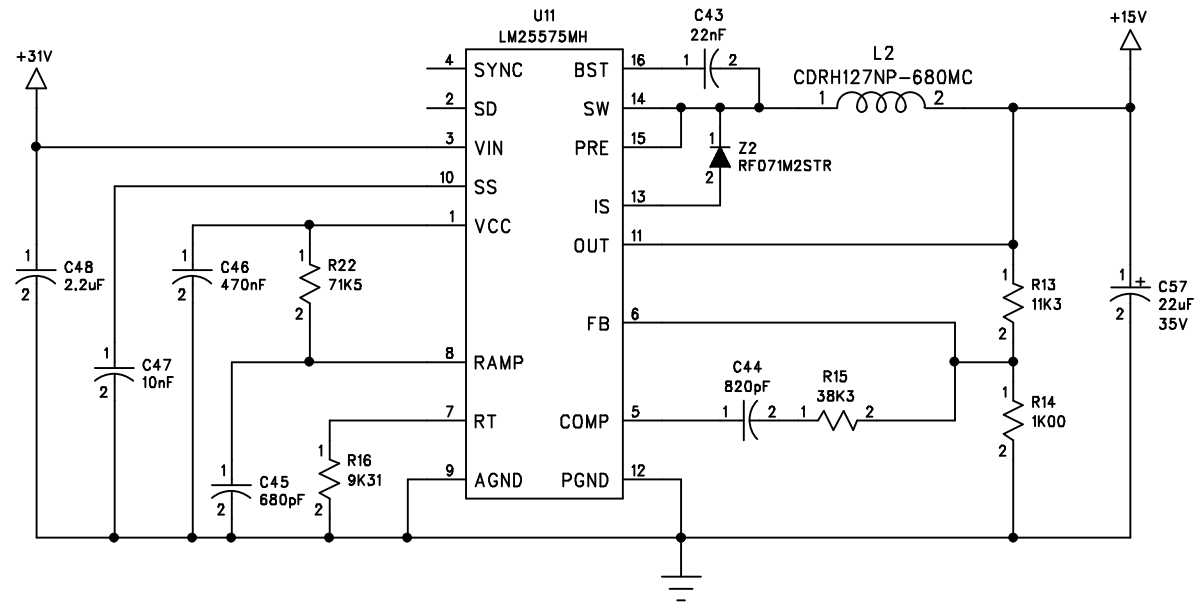
# Isolated DC Current and DC Voltage Sense



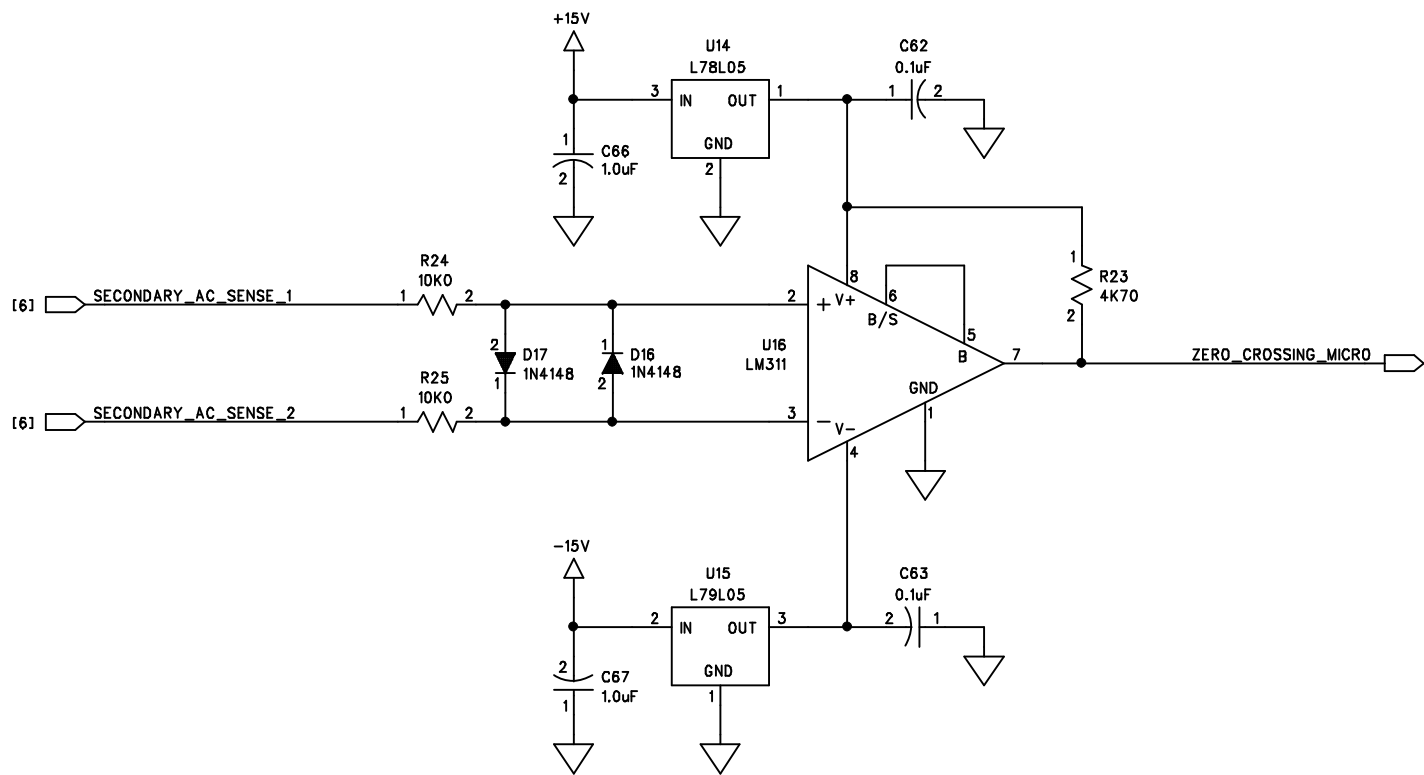
## 5 Volt Power Supply and Step-Down Transformer

Part Number:

Sheet: 6 of 11



# 15 Volt and 24 Volt Power Supplies

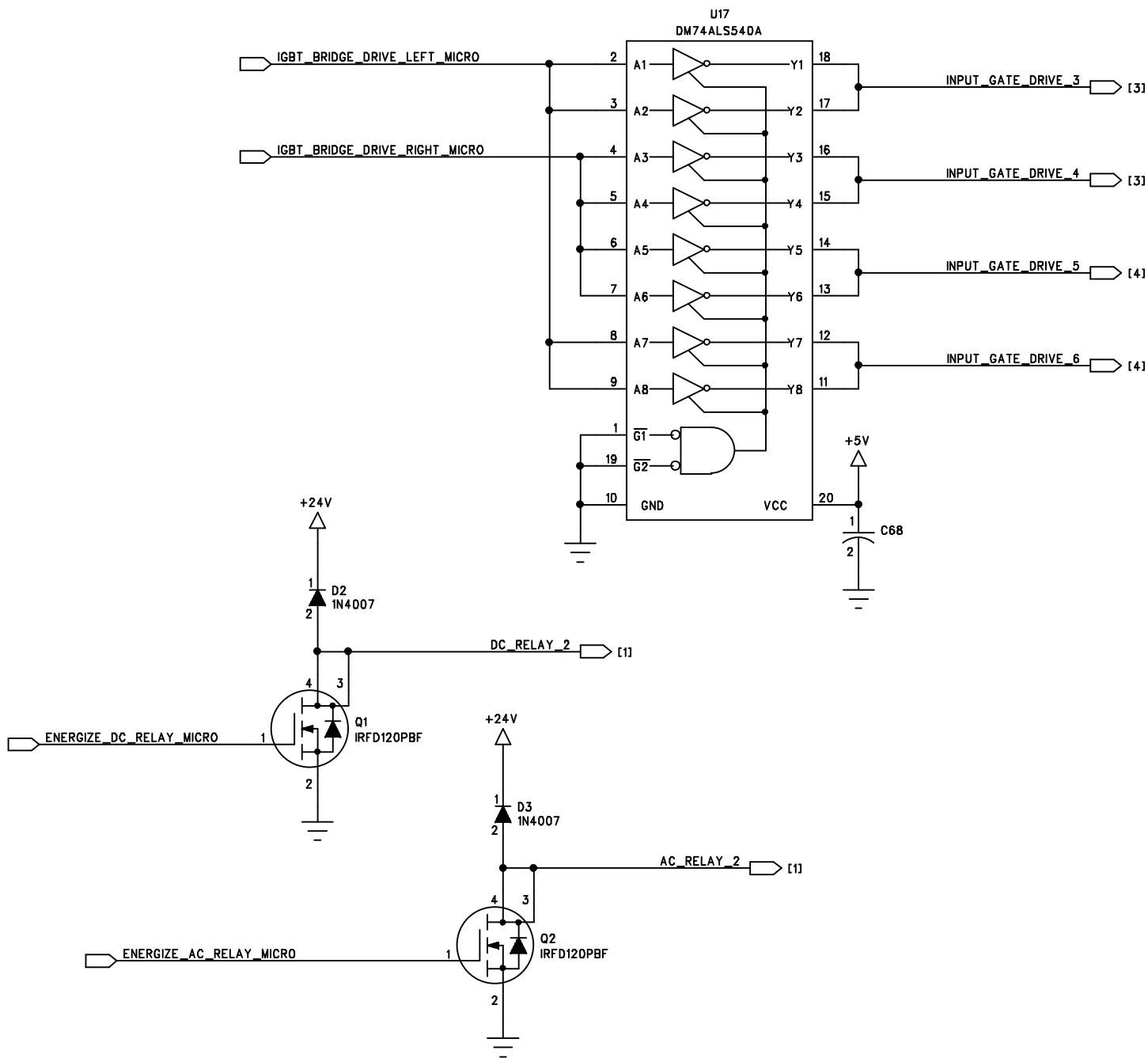


## Zero-Crossing Detector

Part Number:

Sheet: 8 of 11

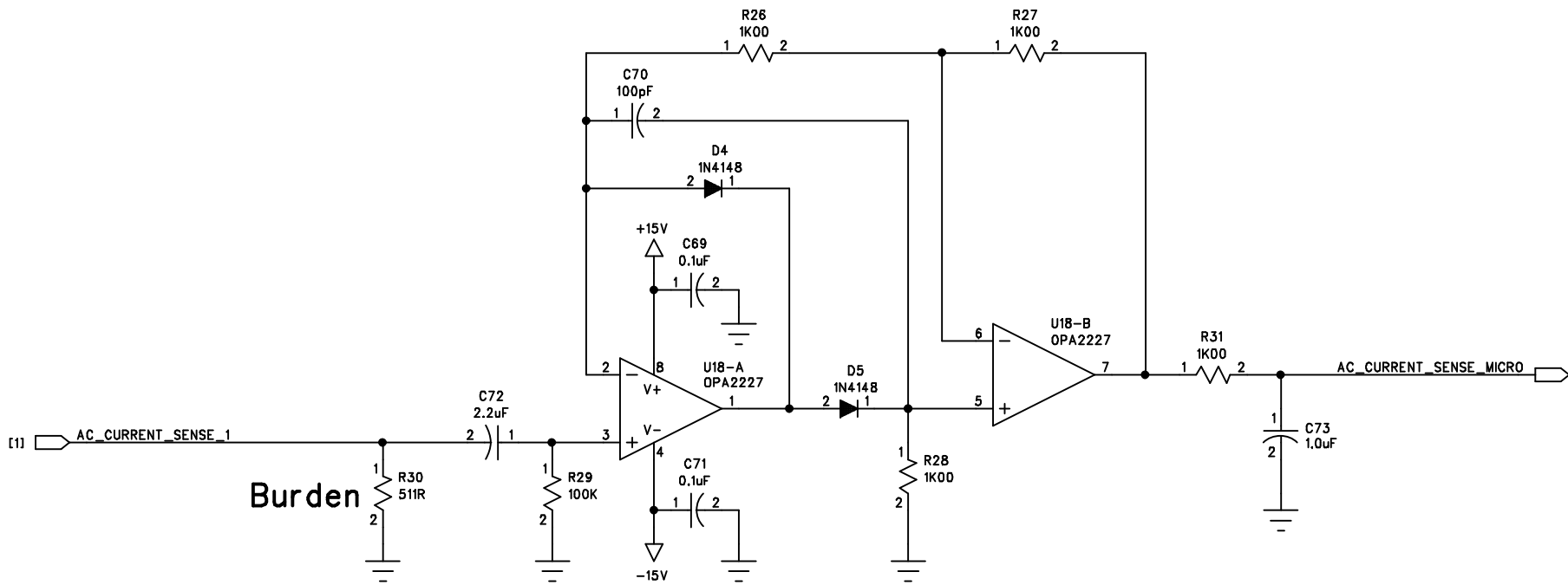




LED and Relay Drivers

Part Number:

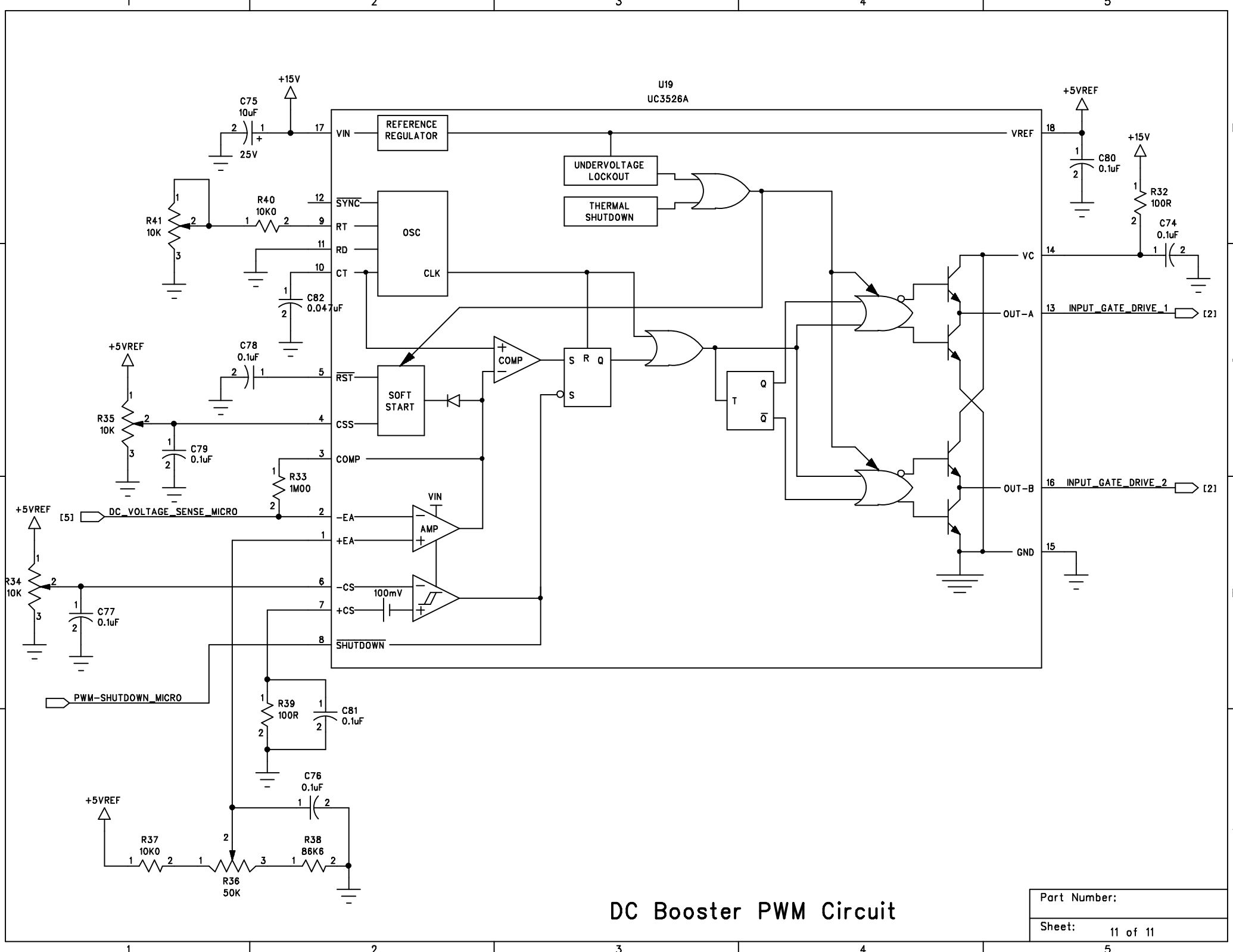
Sheet: 9 of 11



# Current Transformer Full-Wave Rectifier

Part Number:

Sheet: 10 of 11



DC Booster PWM Circuit