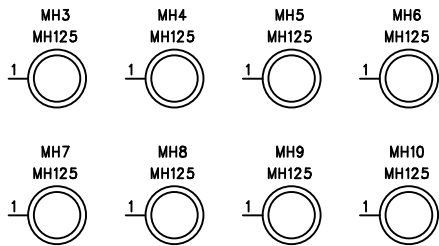


C/L

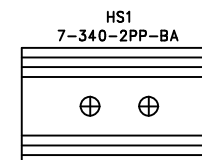
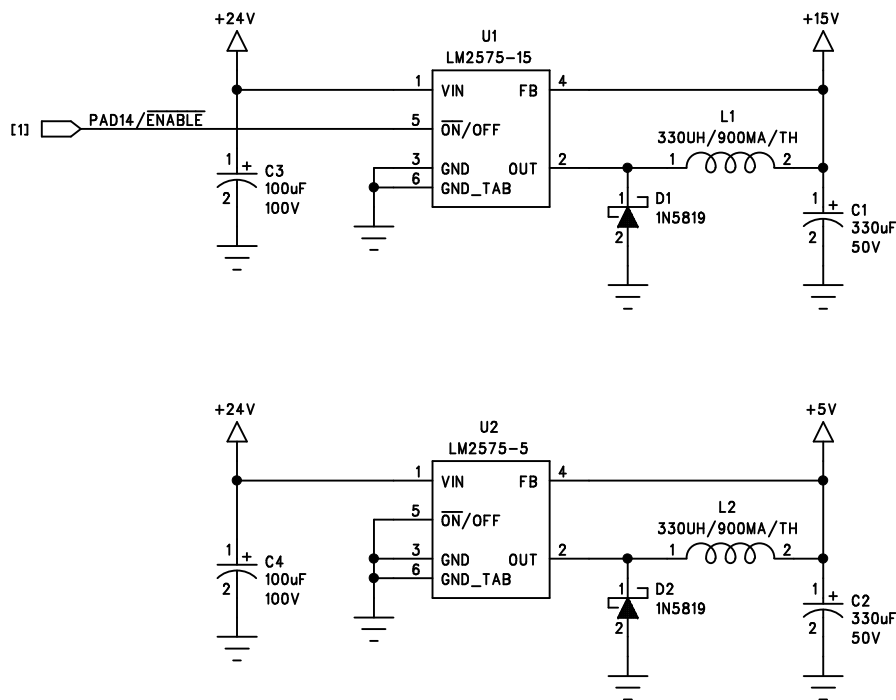
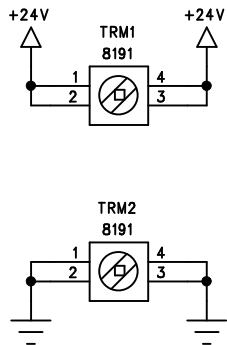
1.7"

C/L

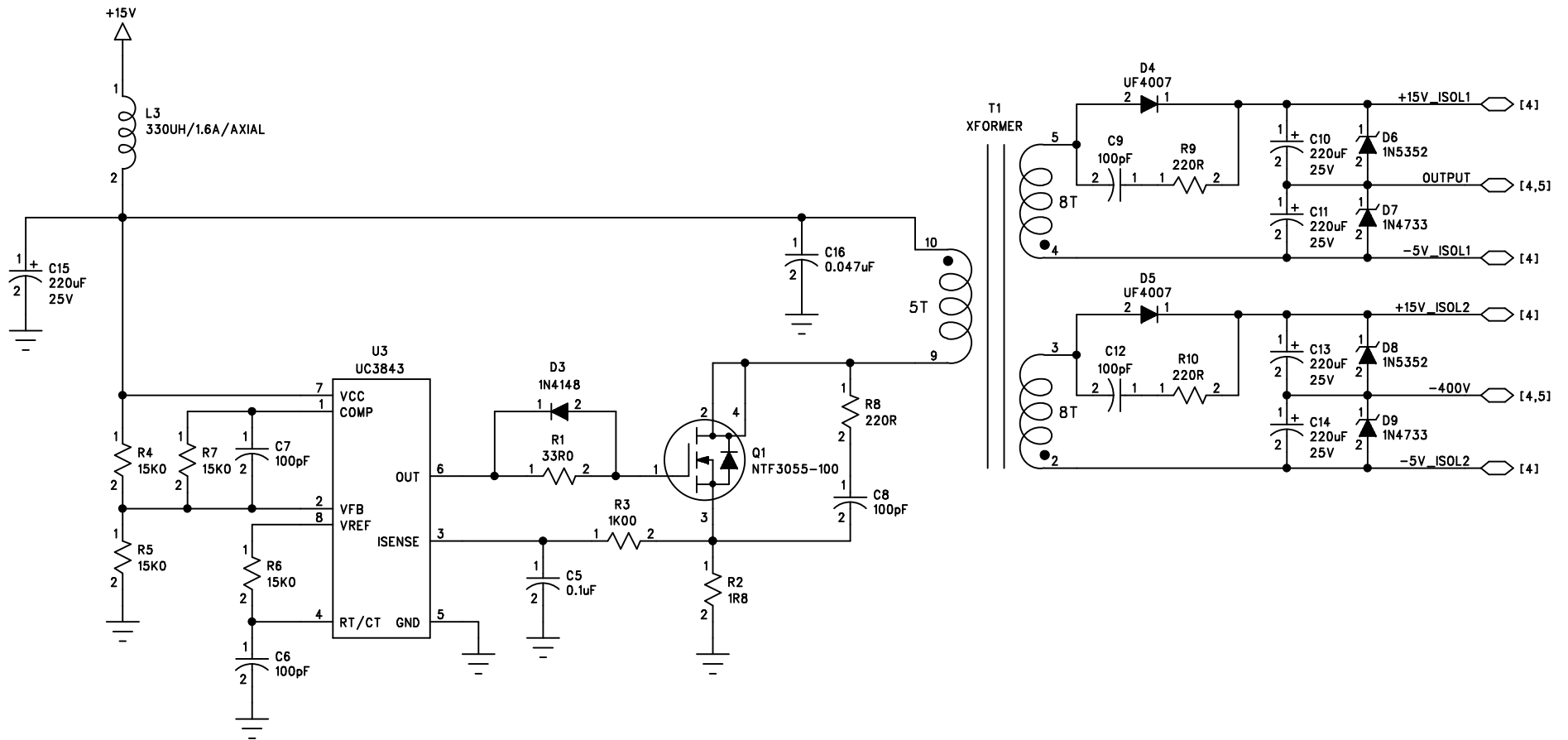


Mounting Holes

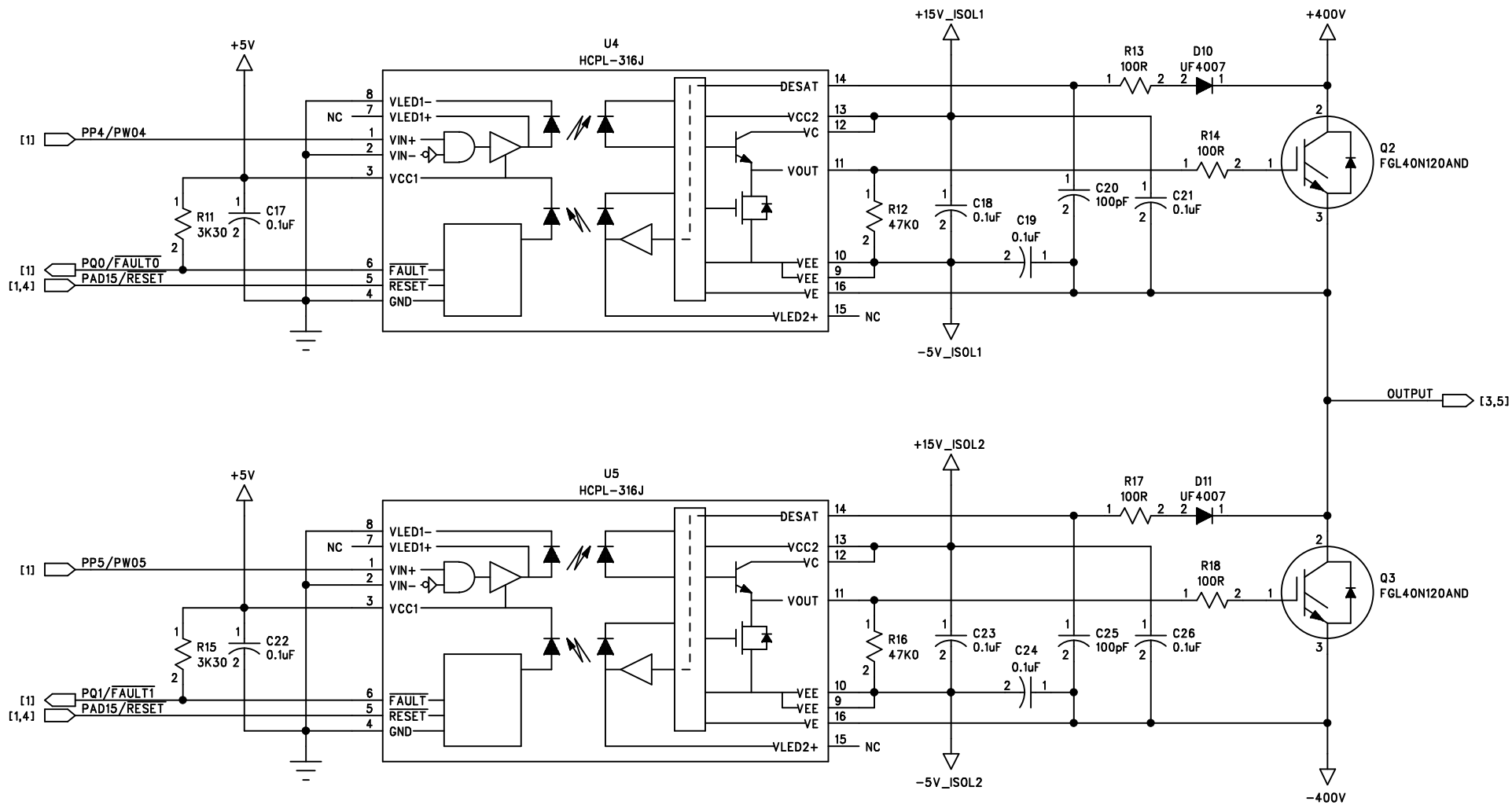
Approvals	Date	Title: Microcontroller Connectors		
Drawn: VG	2008/01/07			
Checked:		Size: A	Part Number:	Rev. A
Approved:		Scale:	Sheet:	1 of 7



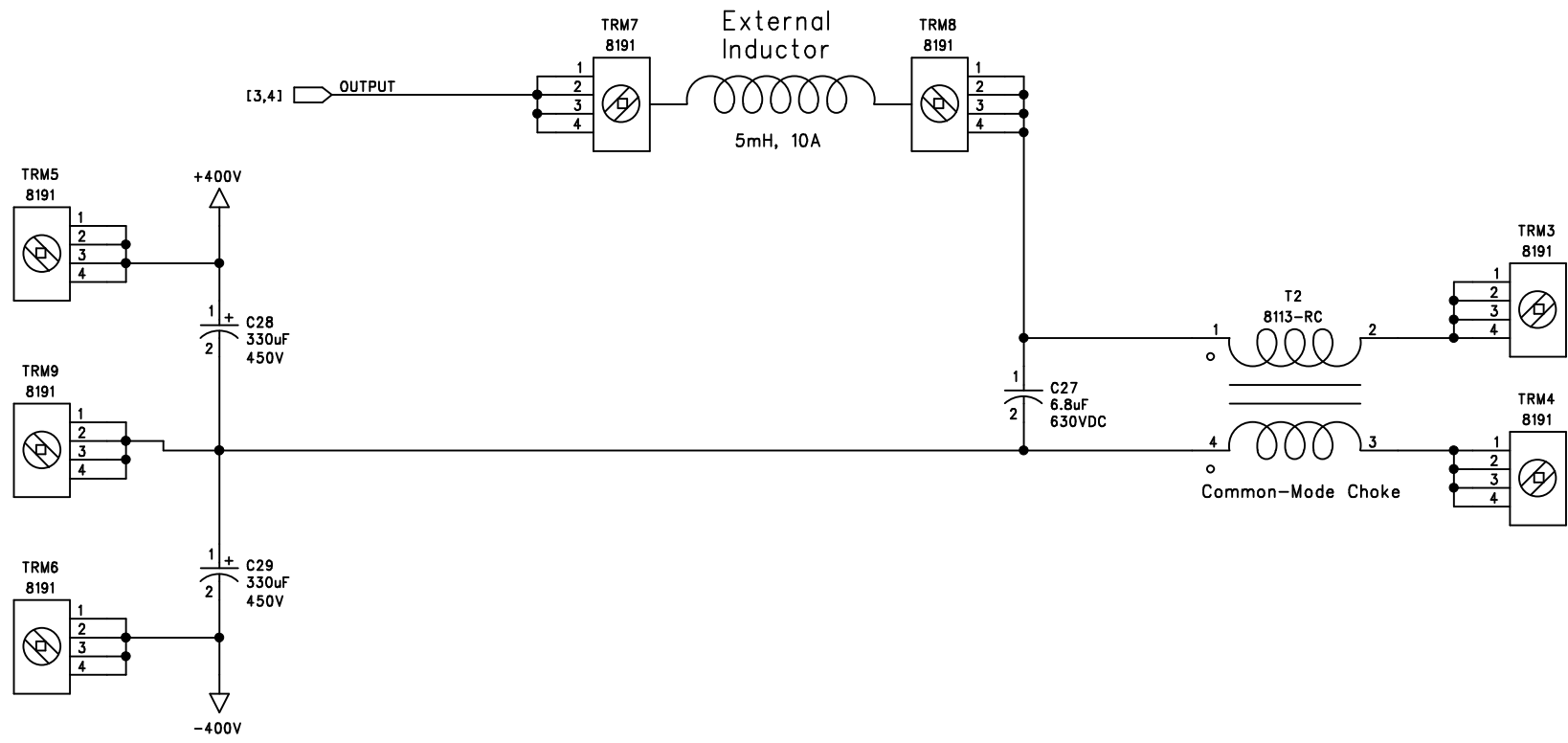
Approvals	Date	Title: Switching Power Supply		
Drawn: VG	2008/01/07			
Checked:		Size: A	Part Number:	Rev. A
Approved:		Scale:	Sheet: 2 of 7	



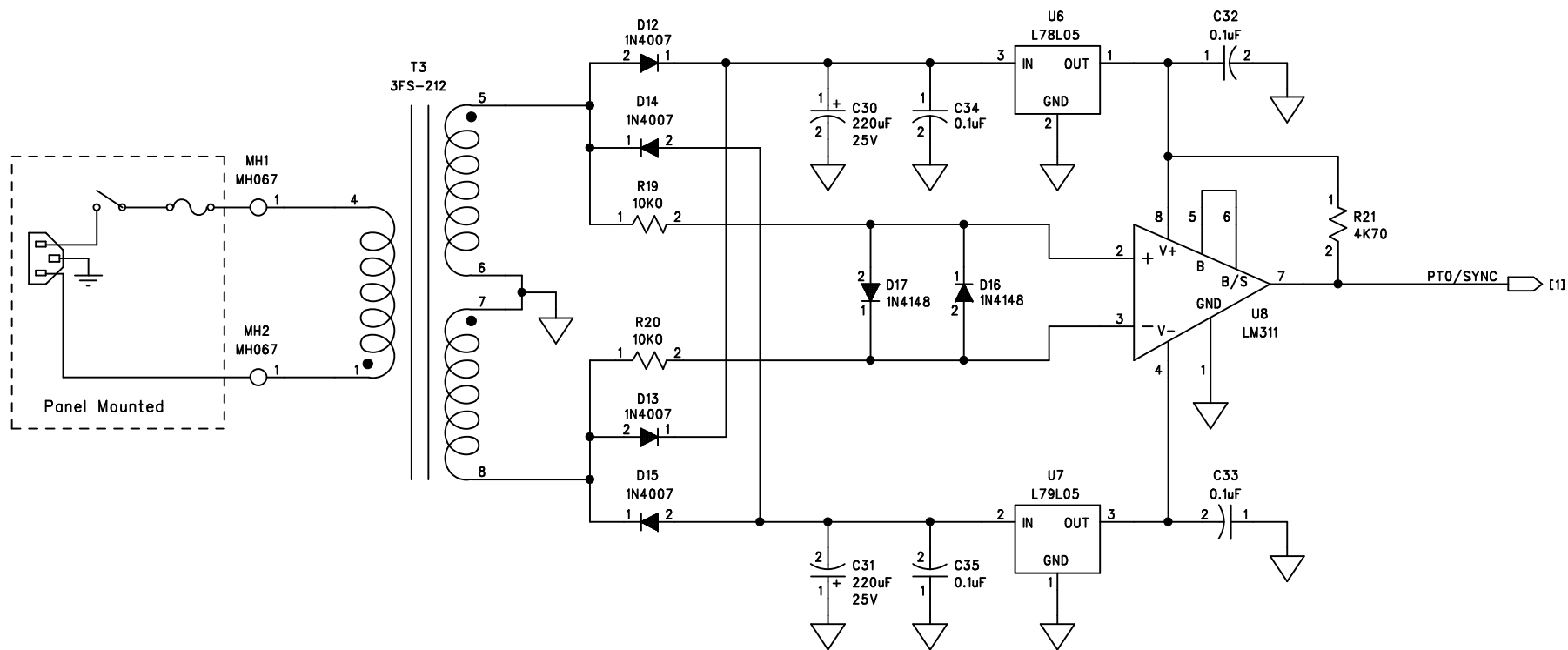
Approvals	Date	Title: Isolated Power Supply		
Drawn: VG	2008/01/07			
Checked:		Size: A	Part Number:	Rev. A
Approved:		Scale:	Sheet: 3 of 7	



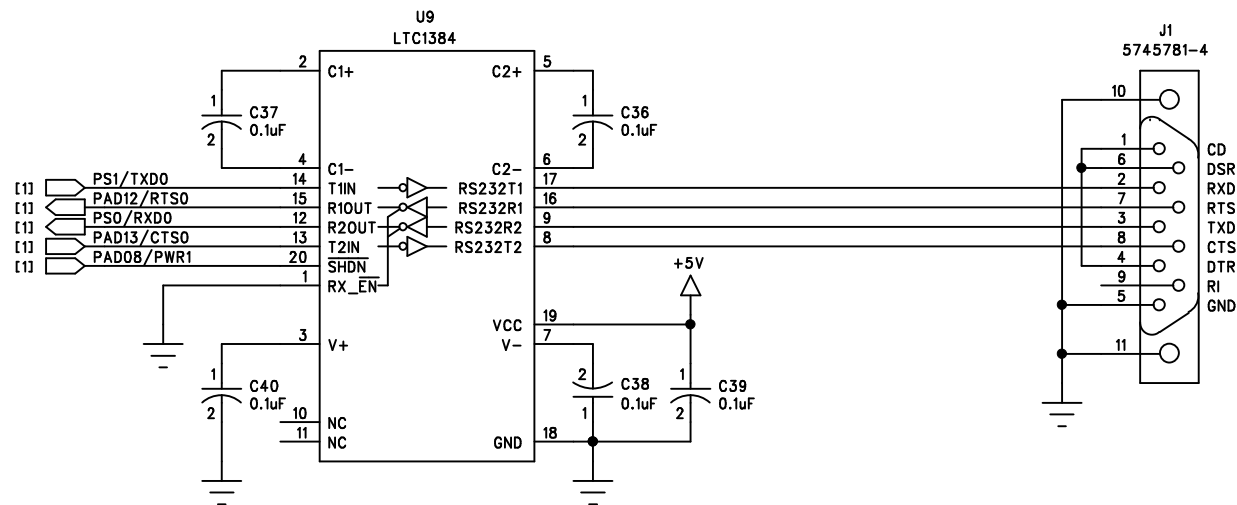
Approvals	Date	Title: Power Output Stage		
Drawn: VG	2008/01/07			
Checked:		Size: A	Part Number:	Rev. A
Approved:		Scale:	Sheet: 4 of 7	



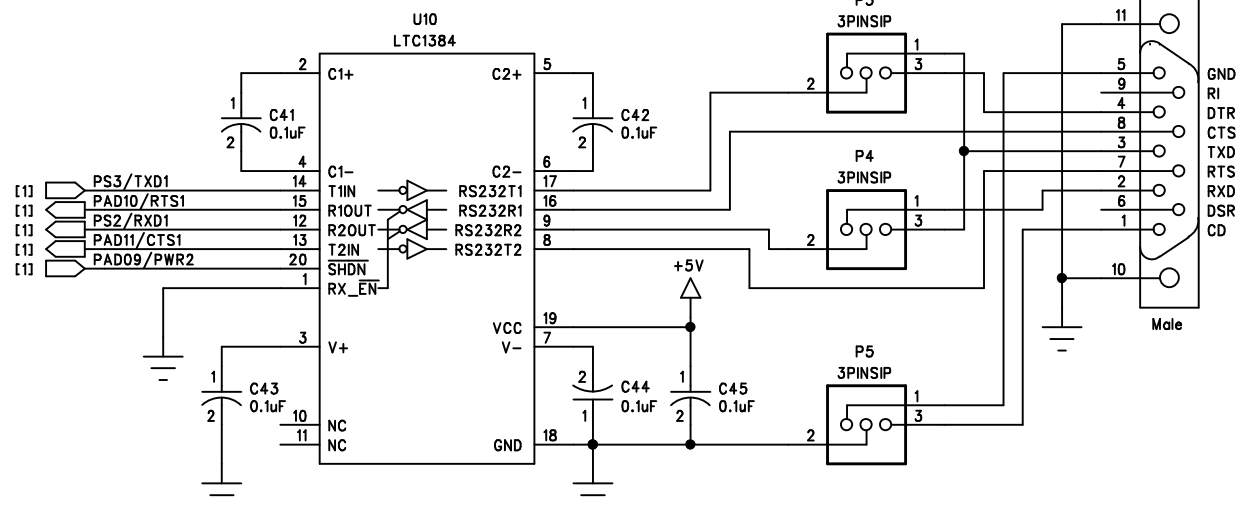
Approvals	Date	Title: Output Filter		
Drawn: VG	2008/01/07	Size: 11x8.5	Part Number:	Rev.
Checked:				
Approved:		Scale:	Sheet: 5 of 7	



Approvals	Date	Title: Zero-Crossing Detector		
Drawn: VG	2008/01/07			
Checked:		Size: A	Part Number:	Rev. A
Approved:		Scale:	Sheet: 6 of 7	



Place jumper on left side of all 3 sips
if a male RS-232 connector is installed.
Otherwise, for a female RS-232 connector
place jumper on the right.



1	CD
6	DSR
2	RXD
7	RTS
3	TXD
8	CTS
4	DTR
9	RI
5	GND

Female

Approvals		Date		Title: RS-232 Circuits and Connectors	
Drawn: VG		2008/01/07		Size: 11x8.5	Rev.
Checked:				Part Number:	
Approved:				Scale:	Sheet: 7 of 7