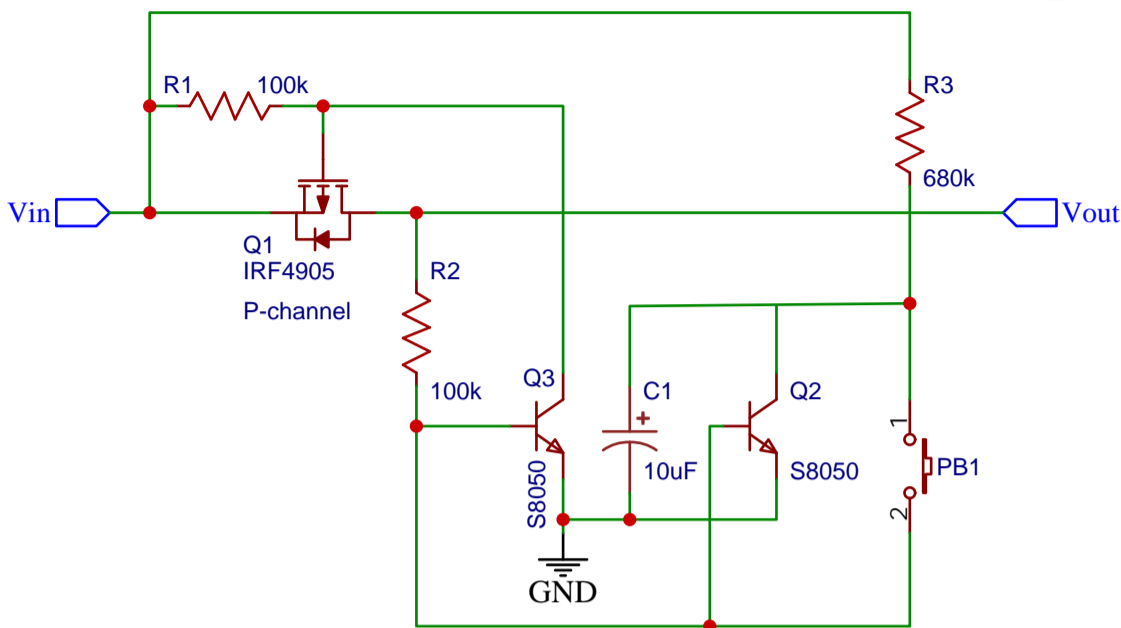


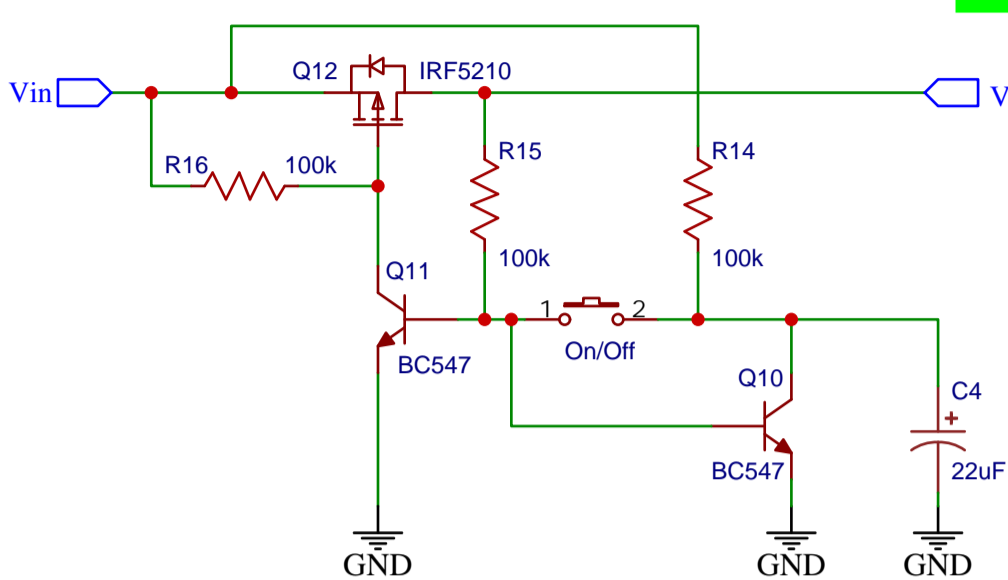
Zero Power Drain Push On,
Push Off Power Switch

1



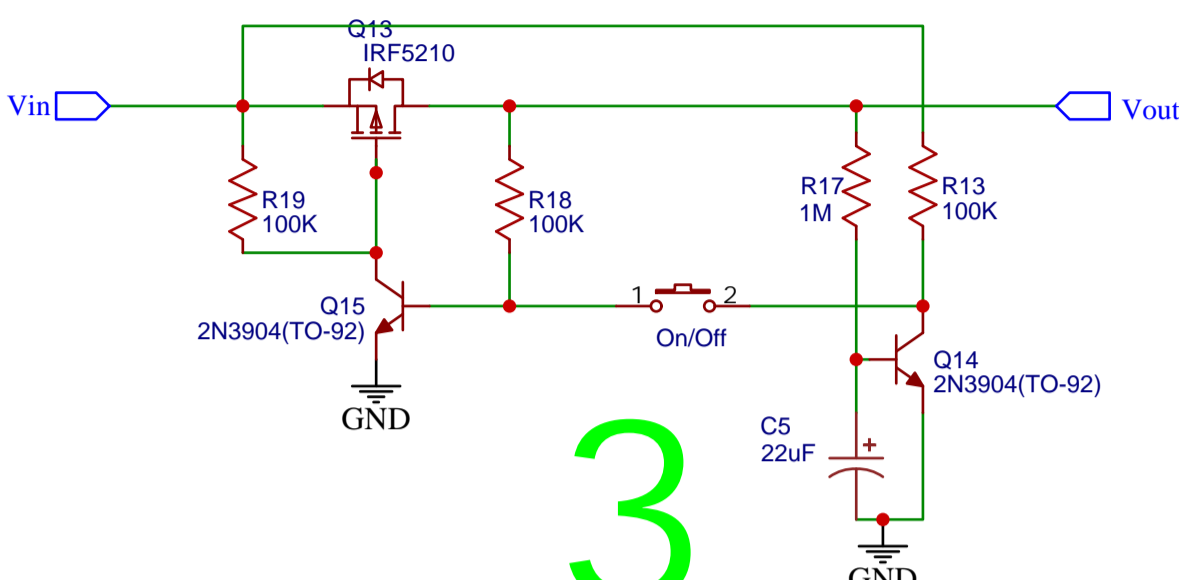
Zero Power Drain Push On,
Push Off Power Switch

2



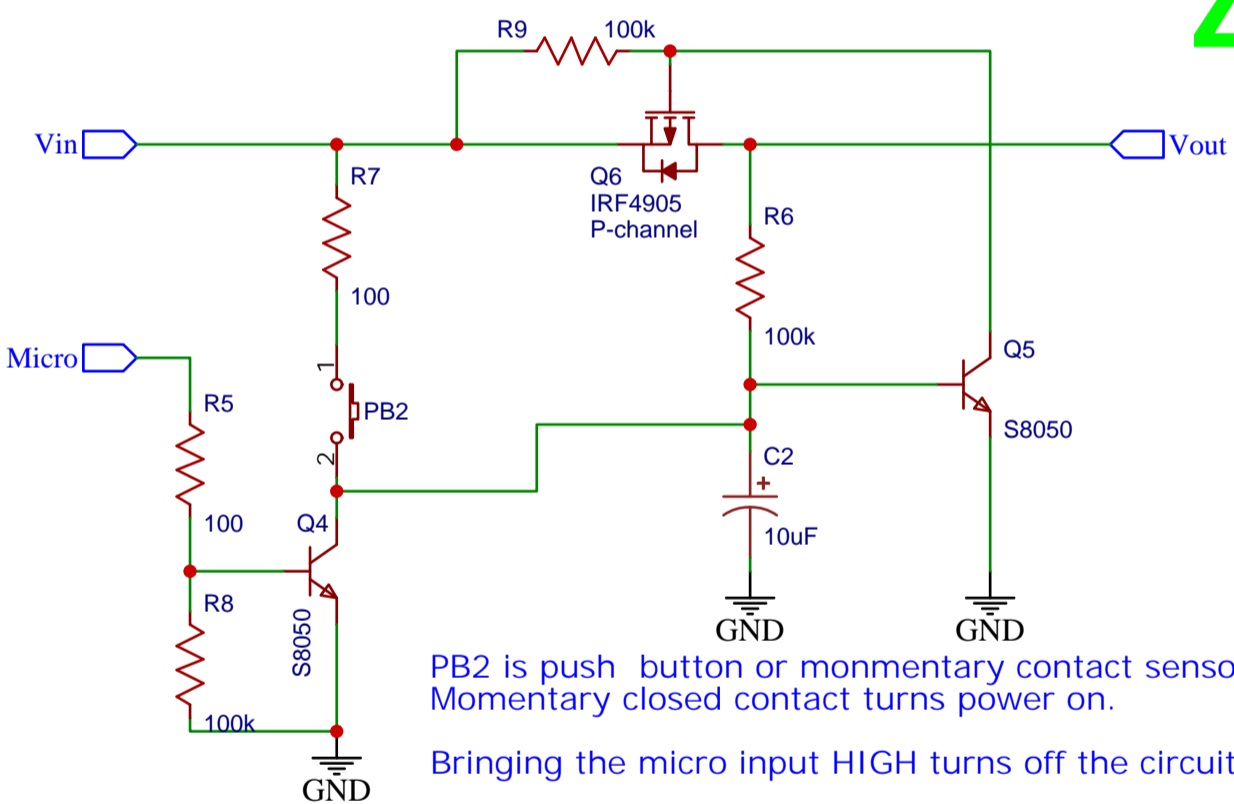
Zero Power Drain Push On, Push Off
Power Switch - EEVblog Version

3

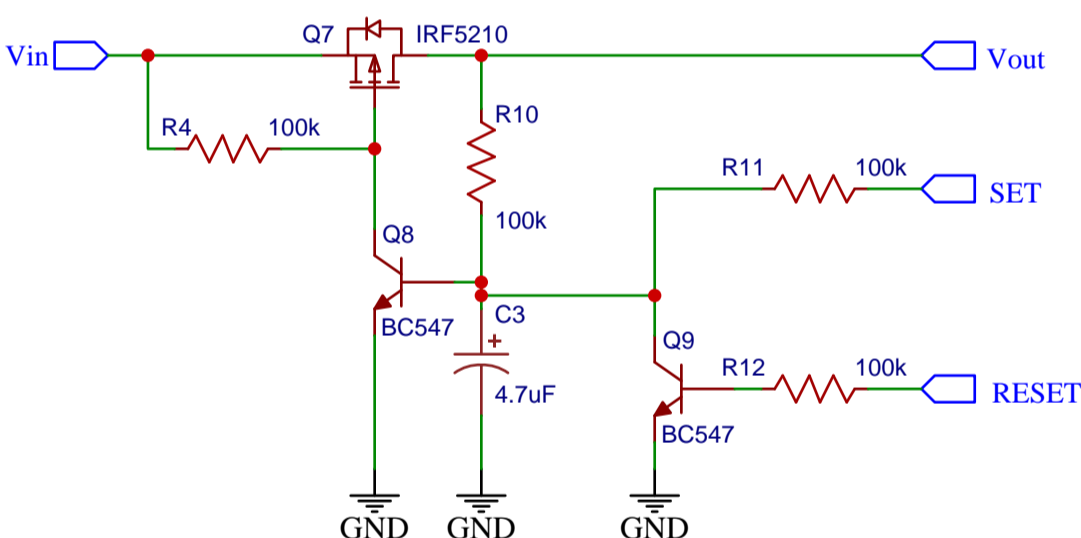


Zero Power Drain Momentary Turn On,
Microcontroller Turn Off Power Switch
(Set = on, reset = off)

5



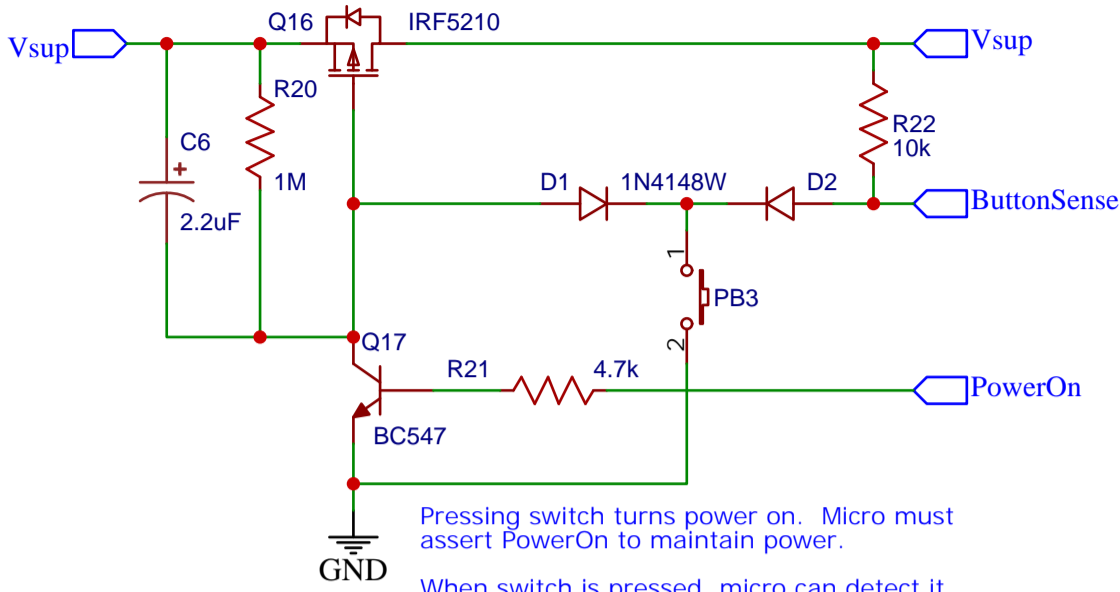
PB2 is push button or momentary contact sensor.
Momentary closed contact turns power on.
Bringing the micro input HIGH turns off the circuit.



Great Scott on YouTube
<https://www.youtube.com/watch?v=y1ROEogHF7A>

Electronoobs on YouTube
https://electronoobs.com/eng_circuitos_tut61.php

https://www.eevblog.com/forum/beginners/understanding-values-chosen-for-eevblog-262-world_s-soft-latching-switch/



Pressing switch turns power on. Micro must assert PowerOn to maintain power.

When switch is pressed, micro can detect it (pulled low). Micro may take actions depending on length of press. A long press might initiate a clean shutdown. PowerOn low shuts off power.

Note: Pressing switch ASKS micro to shutdown.

YouTube: Embrace Making - 5 Soft Latching Power Circuits...

<https://www.youtube.com/watch?v=7D9L9oS4AJM>